



**HE KAI
KEI AKU
RINGA**



E RERE
Whai Mahi
Rangatahi Tū Maia
Whai Pakihi
Rohe Tū Pakari
Whai Mātauranga

He aha a He kai kei aku ringa me E RERE?

Inā kē te nui o te angitū ōhanga kei mua i ngā whānau Māori. E kī ana ngā matapae o te wā tērā ka tino pakari te tipu o ngā tūranga mahi me ngā pakihi. Ko te wā tēnei mō te kōkiri. Ko He kai kei aku ringa, he mahi ngātahitanga nā te Karauna me Ngāi Māori, he rautaki ā-motu mō te whakapakari i te ōhanga Māori. I hua mai ia i 2012. Ko tōna whakakitenga, he ōhanga Māori e whai hua ana, e whai auaha ana, e hoko rawa ana ki tāwāhi, ko ngā whānau kei te ārahi i te waka. He kupu whakarite a He kai kei aku ringa mō te manawaroa me te tino rangatiratanga ā-ōhanga o te iwi Māori.

Ka tohua i a He kai kei aku ringa he whāinga awhero nui hei whakapiki i a Ngāi Māori ki waenga i 2017 me 2021. Ko te whāinga matua, ko te:

› **whakapiki i te whiwhinga moni tauwaenga o Ngāi Māori mā te 20 ōrau i \$26,500 ki \$31,800**

Toro mai ki tō mātau pae tukutuku:

www.erere.maori.nz

Īmera: erere@mbie.govt.nz

Ko te tikanga o **E RERE**, ko ngā whāinga e rima a **He kai kei aku ringa**

E

EMPLOYMENT
Whai Mahi

Ko te whakatipu i te taupori Māori e whai mahi ana

R

RANGATAHI

Rangatahi Tū Maia

Ko te tautoko i ngā rangatahi Māori ki te tautuhi, ki te kōkiri i ō rātau hiahia ōhanga

E

ENTERPRISE

Whai Pakihi

Ko te whakatipu i ngā pakihi Māori

R

REGIONS

Rohe Tū Pakari

Ko te whakapiki i te whai wāhi a Ngāi Māori ki ngā ōhanga ā-rohe

E

EDUCATION

Whai Mātauranga

Ko te whakapiki i ngā pūkenga o te taupori Māori e mahi ana

WHAI MAHI

WHAI MAHI

Ko te tokomaha o Ngāi Māori (he 280,000 tāngata) ka whiwhi moni mā te mahi mō te kaiwhakawhiwhi mahi. Ko te tino angitū matua, ko te whakatipu i te taupori Māori e mahi ana. Ko tōna tikanga, kia nui ake ngā tāngata Māori e whai mahi ana, e whakapiki tūranga ana ki ngā mahi e nui ake ana te utu, e nui ake ana te pūkenga.

Ka piki haere te whai mahi i ngā rāngai katoa kia tae ki 2020, ko ngā pikinga nui ka kitea ki roto i te rāngai hanga, i te rāngai ratonga pakihi, i ngā rāngai hauora, mātauranga hoki.

Ka tino kaha te tipu o te whai mahi mō ngā kaimahi e whai pūkenga ana (ngā kaiwhakahaere me ngā kaimahi ngaio), pēnei i ngā kaitātari pakihi, pūnaha hoki me ngā kaituhi pūmanawa tautono, ngā kaiwhakahaere mahi matihiko me ngā mātanga ture, Mō ngā mahi ringarehe, ka tere te tipu o ngā tūranga kaimahi whakamau wini, whakamau ukutea, whakatakoto rōpinepine, whakatere wai, whakatere hiko hoki.

Ko ā mātau whāinga ki 2021, ko te:

- › **whakaheke i te kaute o Ngāi Māori e noho koremahi ana i te 11.9% ki te 7.5%**
- › **āta whakaheke i te kaute o ngā rangatahi Māori kāore i te mahi, kāore rānei i te huarahi mātauranga i te āhua 22%.**

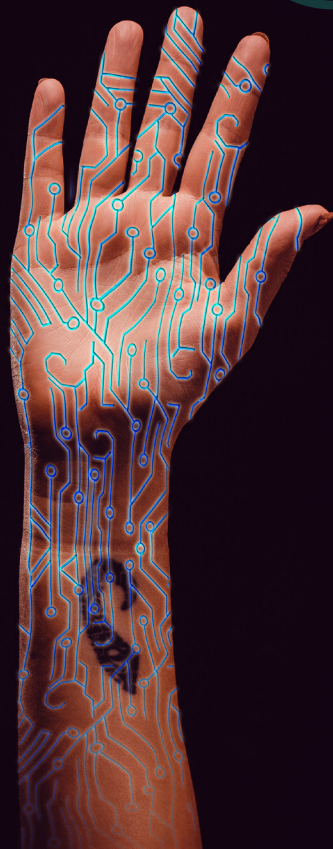


RANGATAHI

Kei te 15.5% (e 723,000 tāngata) te tokomaha o Ngāi Māori ki waenga i te taupori whānui o Aotearoa, ā, e matapaetia ana ka eke tēnei ki te 20% hei te tau 2038. Ko te taupori Māori nei, e hanga rangatahi tonu ana, e tipu ana hoki, ko te 24 tau te pakeke tauwaenga, ā, taro ake ka noho tēnei hunga hei tino wāhanga kei roto i te taupori mahi.

Ko tā mātau whāinga:

- › **ko te tautoko i ngā rangatahi Māori ki te tautuhi, ki te kōkiri i ō rātau hiahia ōhanga.**



WHAI PAKIHI

Ko te nuinga o ngā pakihi i Aotearoa nei, he pakihi iti, wawaenga rānei. He tino huarahi tonu te whai pakihi e whāia ai te tino rangatiratanga, e whiwhi moni hoki ai. Ka noho koe hei rangatira mōu anō, ka whakawhiwhi mahi ki tō whānau me ētahi atu, ka hanga i te hapori tū kaha, ka whai auahatanga, ka hono ki te ao, I te tau 2016, e 29,000 ngā Māori i te whai pakihi, arā hei pakihi takitahi (e 65%), hei pakihi whakawhiwhi mahi rānei (e 35%).

E āhua 1200 ngā Kaporeihana Māori, e mau nei i ngā rawa e \$15 piriona te wāriu. Ko te nuinga o ēnei, ka whakahaere i te whenua Māori me ngā momo rawa e hono ana ki te whenua. Tērā te āhua 1.7 miriona heketeta o ngā whenua Māori, ā, he nui te pito mata ki te whakatipu i te wāriu hei painga mō ngā whānau, ngā hapū me ngā iwi o te motu. E hua ai tēnei pito mata, me whai moni tōpū, me whai pūkenga, me whai hoa hoki. Ka hua tonu mai i ngā kokoraho Tiriti he rawa, he moni tōpū hoki hei whakatipu i te ōhanga.

He nui tonu te pito mata e tipu ai ngā pakihi Māori i ngā rāngai tāpoi, mathihiko, ratonga pakihi, hanga, whakatipu rākau, whakatipu huawhenua hoki.

Ko ā mātau whāinga mō te pakihi, ko te:

- › **whakatipu i ngā pakihi Māori (arā ko ngā pakihi iti, wawaenga hoki)**
- › **whakamōrahi i te wāriu ōhanga o ngā iwi me ngā kāhui kaporeihana**

Ka inehia te eke haere o ēnei whāinga ki 2021 mā te:

- › **nui haere o ngā kaiwhakawhiwhi mahi Māori, e toru ā rātau kaimahi, neke atu rānei, mā te 30 ōrau, i te 8,200 ki te 10,660**
- › **whakapiki i te wāriu o ngā rawa hoko ki tāwāhi a ngā pakihi Māori mā te 9% i ia tau (e tīmata ana i te \$530 miriona i 2015)**
- › **whakapiki i ngā kirimana moni tōpū ka oti i ngā pakihi Māori mā te \$300 miriona**
- › **whakapiki i ngā pakihi Māori e whai wāhi ana ki te pūnaha auaha mā te 5% i ia tau**
- › **whakapiki i te whakamahinga me te whai hua o te whenua Māori**

WHAI MĀTAURANGA

Ka aro ā mātau mahi ki te whakapiki i te mātauranga o te taupori Māori e mahi ana me te whakapakari i ngā huarahi e whakawhiti ai te tangata i te ao mātauranga ki te ao mahi. Hei āpiti atu, ka whakaarohia he huarahi ako auaha e whai painga ai a Ngāi Māori. Kei te haere tonu ngā mahi hei whakawhānui i ngā whakaakoranga ringarehe, i ngā kaupapa tauira kaimahi, i ngā hōtaka waharoa me ngā huarahi mahi. Mā konei e arohia ai ngā hiahia taupori mahi o ānamata. Ka aro mātau ki ngā kaupapa pūtaiao, hangarau, pūkaha, pāngarau hoki, me ngā huarahi mahi matihiko mō Ngāi Māori ki roto i ngā rāngai matua o te wā.

Ka inehia te neke whakamua ki 2021 mā te:

- › **pāpātanga whiwhi tohu NCEA Taumata 2 a Ngāi Māori**
- › **pāpātanga whiwhi tohu NZQF Taumata 4 ki roto i te rāngai wānanga a Ngāi Māori.**

STAT PAGE

MĀTAURANGA

Did you know...

People (2013 census)

- › **Total Māori living in NZ = 723,000**
- › **Māori make up 15% of the NZ population**
- › **Average age of 24 years**
- › **87% live in the North Island**
- › **24% live in Auckland**

Income

- › **Average \$47,385 (2016)**
- › **Median income \$26,500 (2016)**

Home

- › **Home ownership rate**
- › **Rental rate**

Employment

- › **Unemployment rate**
- › **Youth unemployment rate (18-24 years)**
- › **Workforce participation rate**
- › **Skilled employment rate**
- › **Sectors where we work**

STAT PAGE

STAT PAGE