

QUARTERLY CONNECTIVITY UPDATE

Q2: to 30 JUNE 2020



CONTENTS

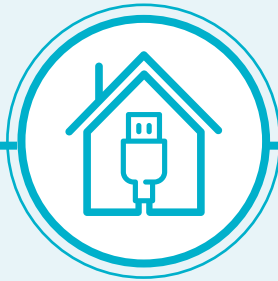
Q2 HIGHLIGHTS	3
OUR TARGETS	4
OVERALL PROGRESS	5
UFB SNAPSHOTS	6
UPDATE BY REGION	
NORTHLAND.....	8
AUCKLAND	9
WAIKATO	10
BAY OF PLENTY	11
GISBORNE	12
HAWKE'S BAY	13
TARANAKI	14
MANAWATŪ-WHANGANUI	15
WELLINGTON.....	16
TASMAN	17
NELSON	18
MARLBOROUGH.....	19
WEST COAST	20
CANTERBURY.....	21
OTAGO	22
SOUTHLAND.....	23



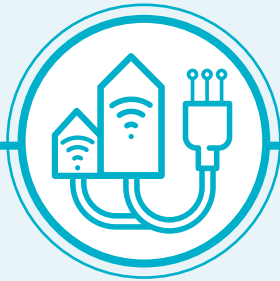
Unifone - Moa Creek

Q2 HIGHLIGHTS

APRIL - JUNE 2020



10,782
UFB HOMES &
BUSINESSES PASSED



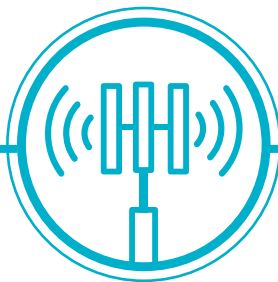
37,612
UFB CONNECTIONS



60%
UFB UPTAKE



25
UFB TOWNS AND
CITIES COMPLETED



40
NEW MOBILE
TOWERS COMPLETE



6,136
RURAL HOMES &
BUSINESSES WITH
ACCESS TO IMPROVED
BROADBAND



186km
STATE HIGHWAY
COVERED



14
NEW TOURISM
SITES COVERED



56
MARAЕ
CONNECTED
THIS QUARTER



\$18m
INVESTED IN
UFB
THIS QUARTER

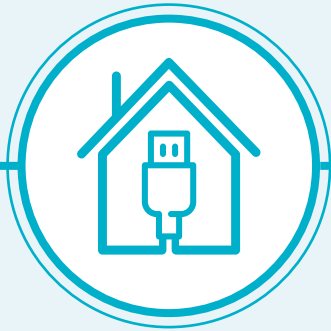


\$37m
INVESTED IN
RBI2/MBSF*
THIS QUARTER

* Rural Broadband Initiative Phase 2 and Mobile Black Spot Fund Programme

OUR TARGETS

ULTRA-FAST BROADBAND (UFB) TARGETS



**OVER 1.8 MILLION
HOMES & BUSINESSES**

(87% of New Zealanders) will have access to UFB by the end of 2022



UFB will be rolled out to over **411 TOWNS & CITIES**



When the programme is complete New Zealand will be one of the **LEADING COUNTRIES** in the OECD for fibre availability



OUR OVERALL TARGET

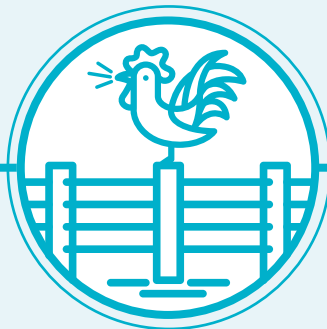
99.8%

of New Zealand's population will be able to access improved broadband by the end of 2023

RURAL BROADBAND INITIATIVE PHASE 2 (RBIZ) AND MOBILE BLACK SPOT FUND (MBSF) TARGETS



851 ELIGIBLE MARAE can connect to broadband on request



84,000 RURAL HOMES AND BUSINESSES will receive improved broadband by the end of 2023



ABOUT 1,400 KM of State Highway and over **168 TOURISM SITES** will receive mobile coverage

OVERALL PROGRESS

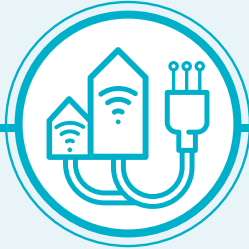
ULTRA-FAST BROADBAND (UFB) PROGRESS



194 UFB TOWNS AND CITIES are now complete



The UFB build is **91% COMPLETE AND 2% AHEAD** of schedule



1,004,385 HOMES AND BUSINESSES connected to UFB



UPTAKE 60%



2% INCREASE in connections versus previous quarter

OUR OVERALL PROGRESS FOR UFB



83%

OF NEW ZEALANDERS CAN NOW ACCESS UFB



177

MARAE ARE NOW CONNECTED



INVESTED IN CY2020

UFB: \$49m

RBI2/MBSF: \$56m

RURAL BROADBAND INITIATIVE PHASE 2 (RBI2) AND MOBILE BLACK SPOT FUND (MBSF) PROGRESS



51,904 RURAL HOMES AND BUSINESSES can access improved broadband
62% complete



50 TOURISM SITES have mobile coverage
30% complete



629KM OF STATE HIGHWAY have mobile coverage
45% complete



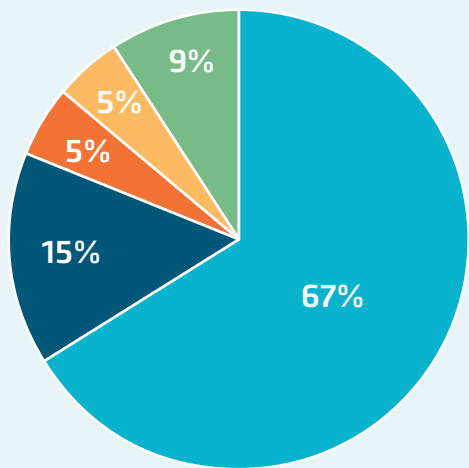
126 MOBILE TOWERS are live
22% complete

UFB SNAPSHOTS

TOP 10 CENTRES FOR UFB UPTAKE THIS QUARTER

RANK	TOWN	UPTAKE %	CHANGE IN RANK
1	Whatawhata	80%	+1
2	Horotiu	77%	+1
3	Rolleston	76%	-2
4	Hamilton	71%	-
5	Waiuku	71%	-
6	Lincoln	71%	+3
7	Tauranga	70%	-1
8	Mosgiel	70%	-1
9	Nelson	69%	-1
10	Auckland	68%	+2

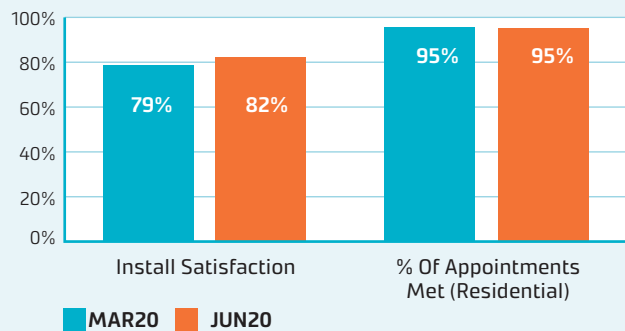
UFB PRODUCT MIX AND INSTALLATION MEASURES



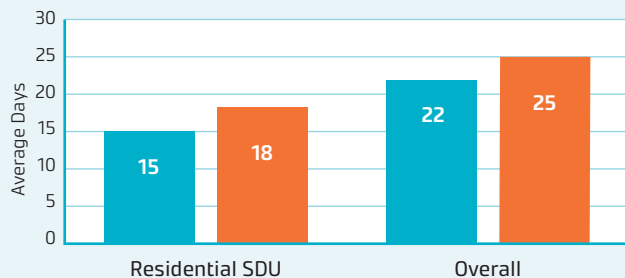
■ 30 Mbps ■ 50 Mbps ■ 100 Mbps
■ 200 Mbps ■ 1 Gbps

The average speed of UFB services is **229 Mbps**. Consumers are continuing to migrate to higher speed UFB plans, including the gigabit plan.

UFB INSTALL CUSTOMER MEASURES



UFB AVERAGE DAYS TO INSTALL



GIGABIT CONNECTIONS

145,785

Gigabit connections - end of quarter

13,126

Additional connections this quarter

UPDATE BY REGION





NORTHLAND



UFB

- There are **18** towns and cities with UFB available.
- **51%** of those with access to UFB have connected.
- There is a total of **21,842** premises connected.

RANK	TOWN	UPTAKE
1	Waipū	66%
2	Hikurangi	64%
3	Whangārei	62%
4	Kerikeri	52%
5	One Tree Point	52%



RB12/MBSF

- There are **7,202** households or businesses with RB12 access which is **78%** of target.
- There are **81** kilometres of mobile coverage on State Highways which is **71%** of target.
- There are **6** tourist sites with mobile coverage which is **40%** of target.
- There have been **25** mobile towers built which is **39%** of target.



MARAE

There are **44** Marae connected in Northland.

TOTAL INVESTED:

Northland: **\$66.3m**





AUCKLAND



UFB

- There are **9** towns and cities with UFB available.
- **67%** of those with access to UFB have connected.
- There is a total of **385,257** premises connected.

RANK	TOWN	UPTAKE
1	Waiuku	71%
2	Auckland	68%
3	Pukekohe	63%
4	Waimauku	59%
5	Waiheke Island	54%



RB12/MBSF

- There are **3,869** households or businesses with RB12 access which is **63%** of target.
- There are **11** kilometres of mobile coverage on State Highways which is **69%** of target.
- There have been **2** mobile towers built which is **8%** of target.



MARAE

There are **4** Marae connected in Auckland.

TOTAL INVESTED:

Auckland: **\$463.7m**





WAIKATO



UFB

- There are **36** towns and cities with UFB available.
- **60%** of those with access to UFB have connected.
- There is a total of **81,150** premises connected.

RANK	TOWN	UPTAKE
1	Whatawhata	80%
2	Horotiu	77%
3	Hamilton	71%
4	Cambridge	67%
5	Tokoroa	58%



RBi2/MBSF

- There are **5,111** households or businesses with RBi2 access which is **50%** of target.
- There are **35** kilometres of mobile coverage on State Highways which is **33%** of target.
- There are **4** tourist sites with mobile coverage which is **31%** of target.
- There have been **4** mobile towers built which is **6%** of target.



MARAE

There are **25** Marae connected in Waikato.

TOTAL INVESTED:

Waikato: **\$149.1m**





BAY OF PLENTY



UFB

- There are **13** towns and cities with UFB available.
- **62%** of those with access to UFB have connected.
- There is a total of **70,083** premises connected.

RANK	TOWN	UPTAKE
1	Tauranga	70%
2	Rotorua	59%
3	Whakatāne	55%
4	Ōmokoroa	51%
5	Katikati	45%



RBI2/MBSF

- There are **3,287** households or businesses with RBI2 access which is **54%** of target.
- There are **25** kilometres of mobile coverage on State Highways which is **38%** of target.
- There are **6** tourist sites with mobile coverage which is **67%** of target.
- There have been **4** mobile towers built which is **11%** of target.



MARAE

There are **13** Marae connected in the Bay of Plenty.

TOTAL INVESTED:

Bay of Plenty: **\$108.7m**





GISBORNE



UFB

- There are **3** towns and cities with UFB available.
- **51%** of those with access to UFB have connected.
- There is a total of **7,856** premises connected.

RANK	TOWN	UPTAKE
1	Gisborne	51%
2	Ruatoria	44%
3	Tolaga Bay	37%



RB12/MBSF

- There are **1,622** households or businesses with RB12 access which is **67%** of target.
- There are **64** kilometres of mobile coverage on State Highways which is **57%** of target.
- There is **1** tourist site with mobile coverage which is **25%** of target.
- There have been **4** mobile towers built which is **24%** of target.



MARAE

There are **33** Marae connected in Gisborne.

TOTAL INVESTED:

Gisborne: **\$17.9m**





HAWKE'S BAY



UFB

- There are **10** towns and cities with UFB available.
- **52%** of those with access to UFB have connected.
- There is a total of **29,716** premises connected.

RANK	TOWN	UPTAKE
1	Napier	57%
2	Bay View	57%
3	Hastings	46%
4	Takapau	46%
5	Wairoa	46%



RB12/MBSF

- There are **1,650** households or businesses with RB12 access which is **39%** of target.
- There are **30** kilometres of mobile coverage on State Highways which is **29%** of target.
- There are **2** tourist sites with mobile coverage which is **22%** of target.
- There have been **8** mobile towers built which is **18%** of target.



MARAE

There are **33** Marae connected in Hawke's Bay.

TOTAL INVESTED:

Hawke's Bay: **\$60.0m**





TARANAKI



UFB

- There are **14** towns and cities with UFB available.
- **58%** of those with access to UFB have connected.
- There is a total of **24,543** premises connected.

RANK	TOWN	UPTAKE
1	New Plymouth	64%
2	Hāwera	60%
3	Lepperton	53%
4	Stratford	51%
5	Inglewood	46%



RBI2/MBSF

- There are **1,615** households or businesses with RBI2 access which is **67%** of target.
- There are **43** kilometres of mobile coverage on State Highways which is **55%** of target.
- There is **1** tourist site with mobile coverage which is **33%** of target.
- There have been **8** mobile towers built which is **47%** of target.



MARAE

There are **8** Marae connected in Taranaki.

TOTAL INVESTED:

Taranaki: **\$39.0m**





MANAWATŪ-WHANGANUI



UFB

- There are **14** towns and cities with UFB available.
- **56%** of those with access to UFB have connected.
- There is a total of **42,465** premises connected.

RANK	TOWN	UPTAKE
1	Longburn	64%
2	Palmerston North	61%
3	Feilding	59%
4	Levin	55%
5	Whanganui	51%



RBi2/MBSF

- There are **7,331** households or businesses with RBi2 access which is **65%** of target.
- There are **58** kilometres of mobile coverage on State Highways which is **67%** of target.
- There are **2** tourist sites with mobile coverage which is **33%** of target.
- There have been **6** mobile towers built which is **15%** of target.



MARAE

There are **16** Marae connected in Manawatū-Whanganui.

TOTAL INVESTED:
Manawatu-Whanganui: **\$87.6m**





WELLINGTON



UFB

- There are **11** towns and cities with UFB available.
- **49%** of those with access to UFB have connected.
- There is a total of **106,937** premises connected.

RANK	TOWN	UPTAKE
1	Masterton	58%
2	Porirua	53%
3	Wellington	52%
4	Ōtaki	51%
5	Hutt City	50%



RBI2/MBSF

- There are **1,895** households or businesses with RBI2 access which is **49%** of target.
- There is **1** tourist site with mobile coverage which is **20%** of target.



MARAE

There are **1** Marae connected in Wellington.

TOTAL INVESTED:

Wellington: **\$187.0m**





TASMAN



UFB

- There are **3** towns and cities with UFB available.
- **48%** of those with access to UFB have connected.
- There is a total of **2,403** premises connected.

RANK	TOWN	UPTAKE
1	Ruby Bay	65%
2	Motueka	49%
3	Kaiteriteri	13%



RBI2/MBSF

- There are **1,031** households or businesses with RBI2 access which is **42%** of target.
- There are **48** kilometres of mobile coverage on State Highways which is **71%** of target.
- There is **1** tourist site with mobile coverage which is **12.5%** of target.
- There has been **6** mobile towers built which is **19%** of target.

TOTAL INVESTED:

Tasman: **\$18.6m**



NELSON



UFB

- There is **1** city with UFB available.
- **69%** of those with access to UFB have connected.
- There is a total of **18,734** premises connected.

RANK	TOWN	UPTAKE
1	Nelson	69%



RB12/MBSF

- There are **27** households or businesses with RB12 access which is **12%** of target.
- There is **1** kilometre of mobile coverage on State Highways which is **5%** of target.

TOTAL INVESTED:

Nelson: **\$23.0m**



MARLBOROUGH



UFB

- There are **3** towns and cities with UFB available.
- **52%** of those with access to UFB have connected.
- There is a total of **9,328** premises connected.

RANK	TOWN	UPTAKE
1	Blenheim	58%
2	Picton	34%
3	Renwick	28%



RBI2/MBSF

- There are **1,222** households or businesses with RBI2 access which is **52%** of target.
- There are **17** kilometres of mobile coverage on State Highways which is **33%** of target.
- There is **1** tourist site with mobile coverage which is **17%** of target.
- There have been **3** mobile towers built which is **16%** of target.

TOTAL INVESTED:

Marlborough: **\$20.7m**



WEST COAST



UFB

- There are **11** towns and cities with UFB available.
- **43%** of those with access to UFB have connected.
- There is a total of **4,534** premises connected.

RANK	TOWN	UPTAKE
1	Hokitika	62%
2	Greymouth	56%
3	Runanga	48%
4	Punakaiki	40%
5	Reefton	31%



RBI2/MBSF

- There are **1,491** households or businesses with RBI2 access which is **52%** of target.
- There are **72** kilometres of mobile coverage on State Highways which is **28%** of target.
- There are **13** tourist sites with mobile coverage which is **42%** of target.
- There have been **17** mobile towers built which is **34%** of target.

TOTAL INVESTED:

West Coast: **\$19.5m**





CANTERBURY



UFB

- There are **31** towns and cities with UFB available.
- **57%** of those with access to UFB have connected.
- There is a total of **133,421** premises connected.

RANK	TOWN	UPTAKE
1	Rolleston	76%
2	Lincoln	71%
3	Woodend	67%
4	Rangiora	62%
5	Timaru	61%



RB12/MBSF

- There are **6,285** households or businesses with RB12 access which is **64%** of target.
- There are **69** kilometres of mobile coverage on State Highways which is **50%** of target.
- There are **5** tourist sites with mobile coverage which is **28%** of target.
- There have been **11** mobile towers built which is **17%** of target.



TOTAL INVESTED:

Canterbury: **\$204.8m**





OTAGO



UFB

- There are **9** towns and cities with UFB available.
- **60%** of those with access to UFB have connected.
- There is a total of **48,495** premises connected.

RANK	TOWN	UPTAKE
1	Mosgiel	70%
2	Dunedin	65%
3	Cromwell	54%
4	Queenstown	54%
5	Ōamaru	52%



RBI2/MBSF

- There are **3,101** households or businesses with RBI2 access which is **62%** of target.
- There are **74** kilometres of mobile coverage on State Highways which is **50%** of target.
- There are **3** tourist sites with mobile coverage which is **25%** of target.
- There have been **7** mobile towers built which is **21%** of target.

TOTAL INVESTED:

Otago: **\$83.2m**





SOUTHLAND



UFB

- There are **8** towns and cities with UFB available.
- **57%** of those with access to UFB have connected.
- There is a total of **17,621** premises connected.

RANK	TOWN	UPTAKE
1	Invercargill	63%
2	Otatara	62%
3	Winton	31%
4	Mossburn	31%
5	Manapouri	25%



RBI2/MBSF

- There are **5,165** households or businesses with RBI2 access which is **88%** of target.
- There are **5** kilometres of mobile coverage on State Highways which is **13%** of target.
- There are **4** tourist sites with mobile coverage which is **25%** of target.
- There have been **21** mobile towers built which is **54%** of target.

TOTAL INVESTED:

Southland: **\$41.7m**

