



Accessing Government Settlement Funding



[New Zealand Government](#)

Thank you for inviting me today.

I am pleased to have the opportunity to share information about what most of you probably think is a bit of a mystery – how to access government settlement funding.

How does Government Settlement Funding work?

Government settlement funding is allocated to support the five outcome areas of the New Zealand Migrant Settlement and Integration Strategy. The allocation process:

- involves cross-government **collaboration**
- supports the effective **targeting** of government resources
- **works through** the Strategy governance structure.

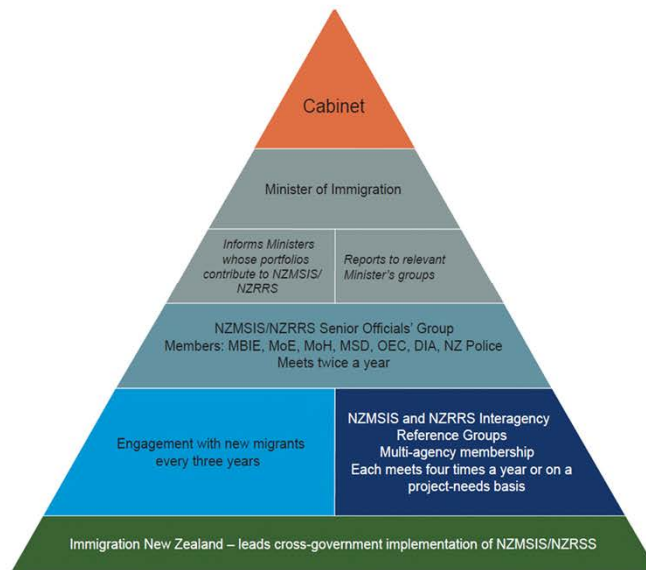


A reminder that the **five outcome areas** of the Strategy: Employment, Education and Training, English language, Inclusion, Health and Well-being.

The Strategy involves the active engagement of a wide range of Government agencies

So let's look at the Strategy Governance Structure (next slide)

Strategy Governance group decision-making



Before Government settlement funding can be approved, proposals need to make their way through the Strategy governance structure.

The **objectives** of the governance structure (as signed off by Cabinet in 2014) are to:

- support effective decision making on the targeting and delivery of settlement services;
- foster collaboration and a coherent approach between agencies on settlement-related policy, service purchase and delivery;
- identify gaps in service provision and seek solutions, without duplication;
- ensure accountability and better reporting on outcomes.

NOTE: the Governance structure is combined for delivering both the Migrant Settlement and Integration Strategy and the Refugee Resettlement Strategy.

What informs Governance decision-making?

It's a bottom up process:

1. We listen to migrants (regular consultations) and settlement sector stakeholders
2. Local Settlement Networks identify gaps, needs
3. We look at recent trends in the Strategy's 16 outcome indicators and results of outcome evaluations of current settlement services.
4. Cross-Government Settlement Reference Group uses the information collected to identify service and information gaps across the 5 Strategy outcome areas and key priorities
5. Senior Officials Group collaborates on service purchase to recommend to Ministers /Cabinet

MARTIN JENKINS

MINISTRY OF BUSINESS,
INNOVATION & EMPLOYMENT
HĪKINA WHAKATUTUKI

NATIONAL MIGRANT CONSULTATIONS 2018

Recent migrants' experiences of settling and adjusting to life
in New Zealand
September 2018



NEW ZEALAND
IMMIGRATION

MINISTRY OF BUSINESS,
INNOVATION & EMPLOYMENT
HĪKINA WHAKATUTUKI

INZ leads cross-government consultations with recent migrants every three years.

We also consult with settlement service providers on the outcome of consultations with migrants.

Local Settlement Networks are also important for identifying settlement needs and gaps. INZ Relationship Managers can advise on the issue and elevate it to Strategy staff .

Government agencies meet four times annually to share information received about settlement service need, discuss issues and contribute their specialised expertise to the identification of key priorities

The Senior Officials Group is mandated to collaborate on settlement-related policy, service purchase and effective delivery to migrants, and make recommendations to Ministers and/or Cabinet

Settlement funding allocation objectives

- Ensure the mix of services funded will **most effectively deliver results across all** of the Strategy outcomes and success indicators
- Reach **consensus decisions** across agencies on proposed funding allocations
- Support the **prioritisation of Government funding** for settlement within the broad landscape of settlement services
- Identify opportunities for **cross-government partnerships** in service delivery



So what underpins the process for funding settlement activities?

The consideration process includes the following:

Does the activity align with the Strategy outcomes?

Do most agencies agree the activity should receive funding?

Is it a priority when considered with other activities under consideration?

Can other agencies team up to deliver (or fund) the activity?

Assessment criteria



We assess and prioritise proposals, based on:

- how well they **support the Strategy outcomes and indicators**
- how well they contribute to an **effective mix** of services
- ensuring they **do not duplicate** any other government activity or service provided by other organisations
- opportunities for **collaboration and partnering**
- **value** for money
- **feasibility**, including cost, the design and implementation plan and the agency's capacity to deliver it
- the framework for **monitoring and evaluating** the contribution to the Strategy outcomes.

These are the criteria that any settlement services, or proposed services, should demonstrate.

There is no set application form, nor any guarantee that proposed services will be prioritised for funding in any year.

The Strategy supports all recent migrants, and settlement services & information are targeted to the needs of specific migrant groups, such as the partners of skilled migrants, or Pacific migrants, or vulnerable migrants

Where does the funding come from for supporting settlement?



Crown



Immigration Levy



**Migrant Levy
Memorandum Account**



Crown funding

Crown funding supports established settlement services and access to mainstream services that migrants are eligible for, such as healthcare and education. Crown funding also helps us to provide information, tools and resources tailored to the needs of recent migrants and their employers.

Immigration Levy

The Immigration Levy supports settlement services that align with the Strategy outcomes, specifically benefit migrants and have an established evidence base. This levy was introduced in 2015 to replace the former Migrant Levy. Migrants pay this levy when applying for their visa.

There is \$7.757 million Immigration Levy revenue available annually for settlement services provided across government agencies. Cabinet makes decisions on the allocation of Immigration Levy funding for settlement every 4 years.

Services funded include Regional Skills Matching programmes and multilingual information services which MBIE contracts external providers to deliver, the TECs Work Connect programme, Bilingual Support Workers in schools and the Welcoming Communities Programme.

Accrued Migrant Levy revenue

The Accrued Migrant Levy supports one-off, short-term and small-scale settlement initiatives. This levy allows us to respond to migrants' settlement needs in the period between Cabinet considerations of longer term Immigration Levy or Crown settlement

funding allocations. Short term allocations enable innovative approaches to be trailed and evaluated and for an evidence base to be built before longer term funding is considered.

It is a small amount of revenue that continued to accrue in 2016/17 after the new Immigration Levy replaced the Migrant Levy in 2015. This funding is no longer continuing to accrue.

Initiatives that have been funded include the Welcoming Communities pilot; Work Connect pilot; Phase 1 and 2 of HRC's 'Give Nothing to Racism' campaign.; the NZ Police District Safety patrols)

So, in conclusion, Government is just one source of funding for settlement activities and services; migrants also contribute, and so do philanthropic trusts and local sources of funding.

Where does Levy funding go?

Current Services by Outcome area	Agency responsible
EMPLOYMENT	
Migrant Futures - Work Connect Programme (mentoring services) (continuation and expansion of 2016/17 small-scale initiative)	Tertiary Education Commission
Regional Skills matching and job search assistance services Expanded service	MBIE (delivered by external providers)
EDUCATION AND TRAINING	
Bilingual Support Workers (BSW) New service which will build on BSW for refugees programme	Ministry of Education
ENGLISH LANGUAGE	
English for Speakers of Other Languages (ESOL) provision for adult migrants Continuing	Tertiary Education Commission (delivered by external providers)
ESOL in schools Continuing	Ministry of Education
INCLUSION	
Multi-lingual Settlement Information Programmes Continuing	MBIE (delivered by external providers)
Facilitating Migrant Participation in Host Communities New	MBIE (delivered by external providers/local councils)
Regional Relationship Manger activity	MBIE
Expansion of the Welcoming Communities programme (following 2017/18 – 2018/19 pilot)	MBIE (delivered by local councils)



This information reflects decisions made by Cabinet this year (2019)

Funding is allocated to government agencies that have expertise in specific areas of migrant settlement. The settlement services may be delivered either by the government agency, or by a third-party provider

This process means that there is no pool of funding to give out.

Once the funding allocations are agreed by Ministers/Cabinet, agencies have to follow All of Government procurement processes and rules for any services not provided directly by the Government Agency.

You will note that some services on this chart are delivered directly by Government agencies and some are contracted out.

Thank you

Any questions?

