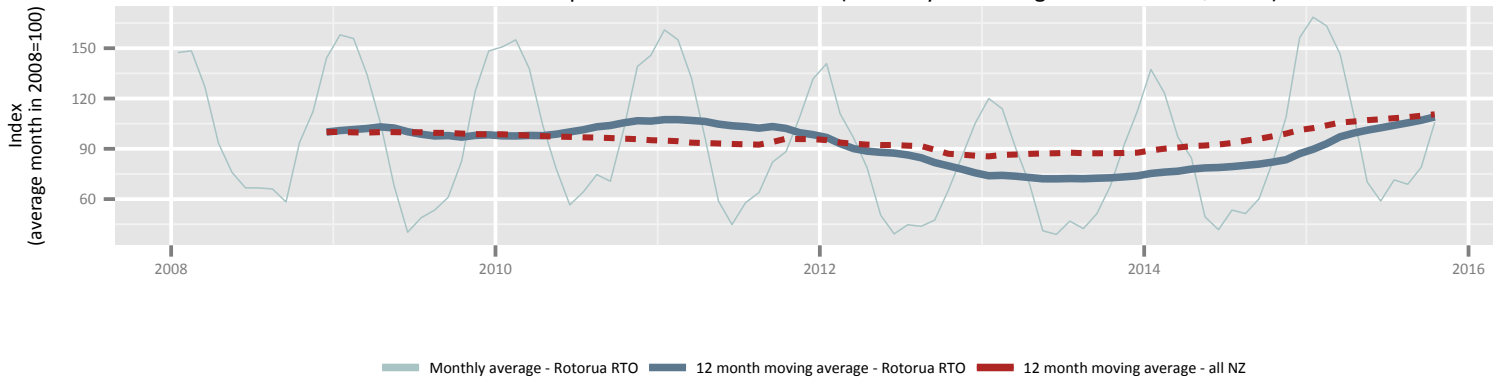
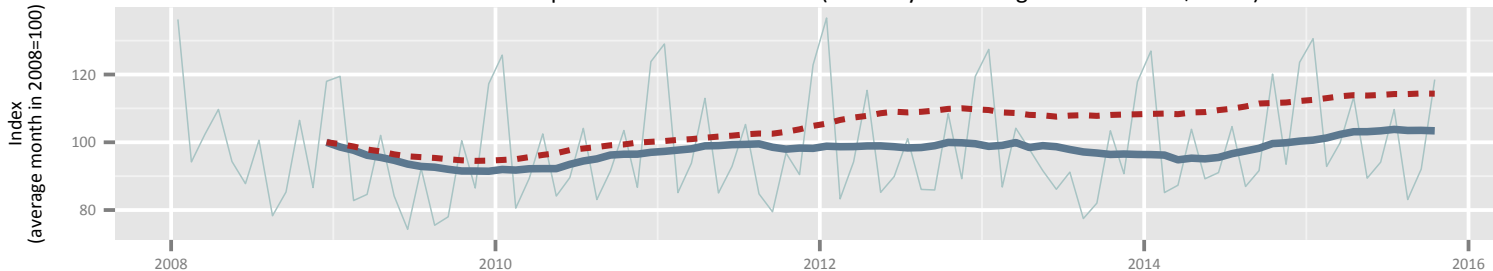


Regional Tourism summary Rotorua RTO

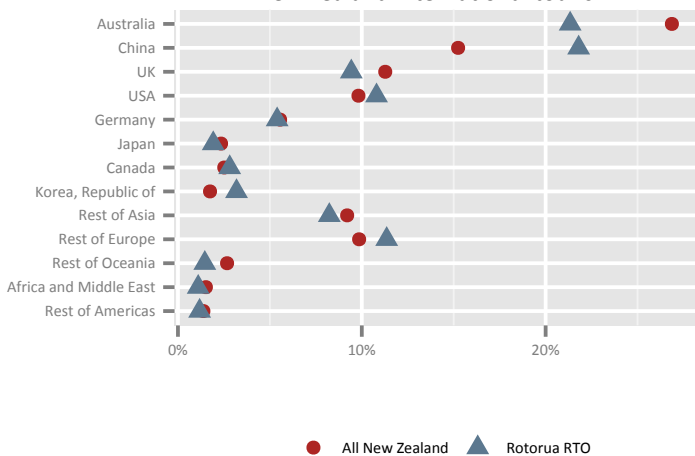
International tourist expenditure in Rotorua RTO (total in year ending March 2015 = \$300m)



Domestic tourist expenditure in Rotorua RTO (total in year ending March 2015 = \$300m)



International tourist spend in Rotorua RTO compared to all New Zealand international tourism



Domestic tourist spend in Rotorua RTO compared to all New Zealand domestic tourism

