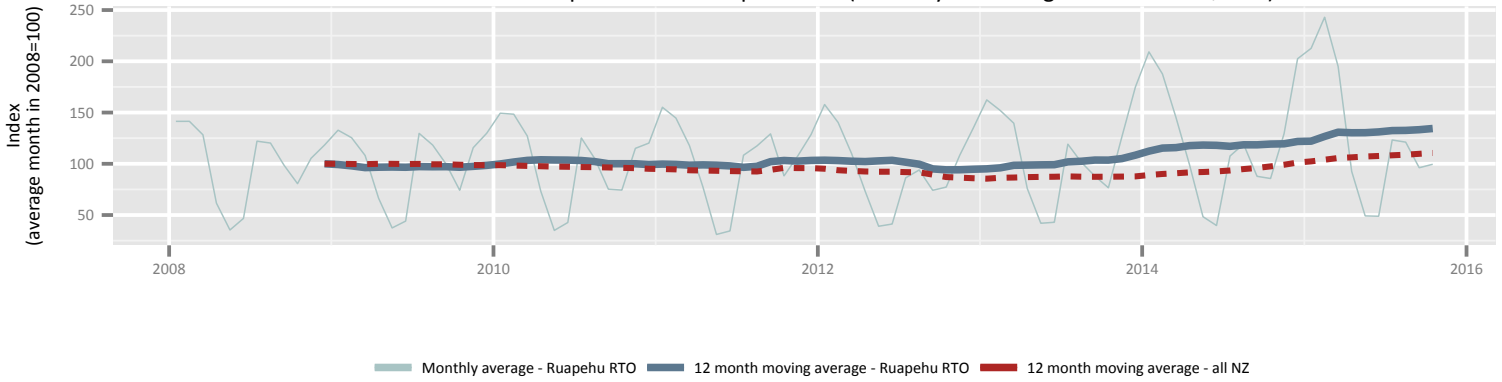
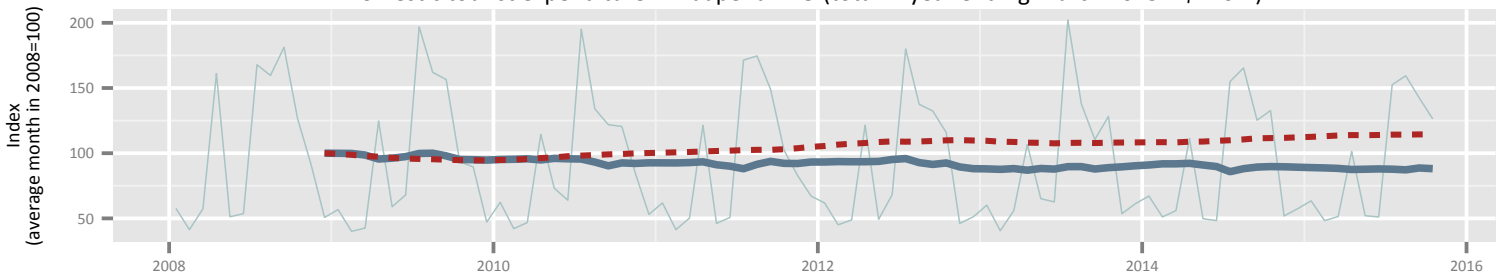


Regional Tourism summary Ruapehu RTO

International tourist expenditure in Ruapehu RTO (total in year ending March 2015 = \$20m)



Domestic tourist expenditure in Ruapehu RTO (total in year ending March 2015 = \$120m)



International tourist spend in Ruapehu RTO compared to all New Zealand international tourism



Domestic tourist spend in Ruapehu RTO compared to all New Zealand domestic tourism

