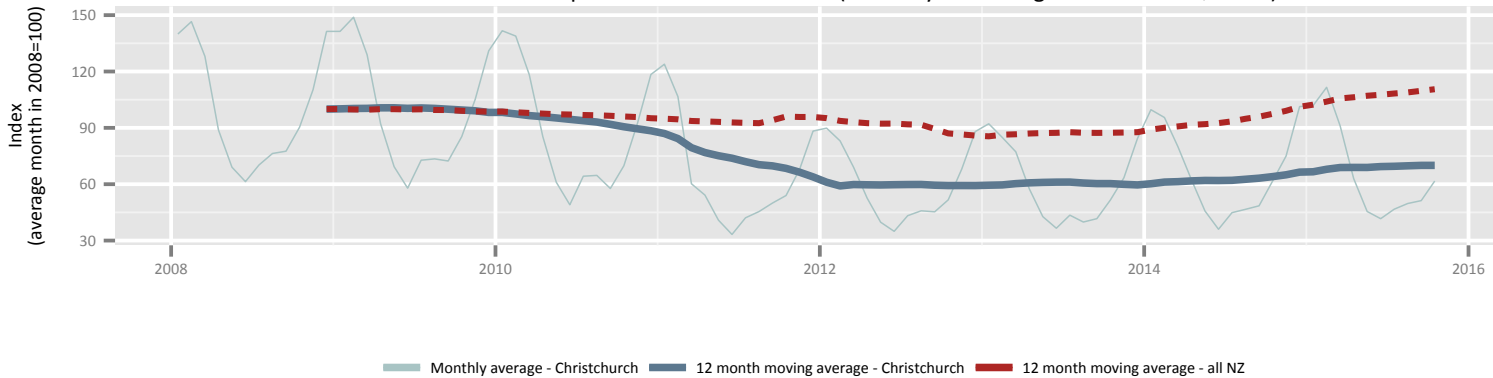
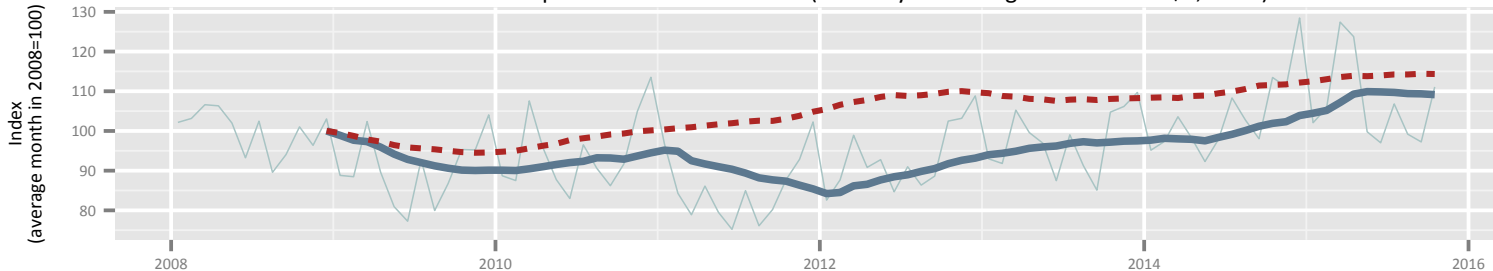


Regional Tourism summary Christchurch

International tourist expenditure in Christchurch (total in year ending March 2015 = \$680m)



Domestic tourist expenditure in Christchurch (total in year ending March 2015 = \$1,070m)



International tourist spend in Christchurch compared to all New Zealand international tourism



Domestic tourist spend in Christchurch compared to all New Zealand domestic tourism

