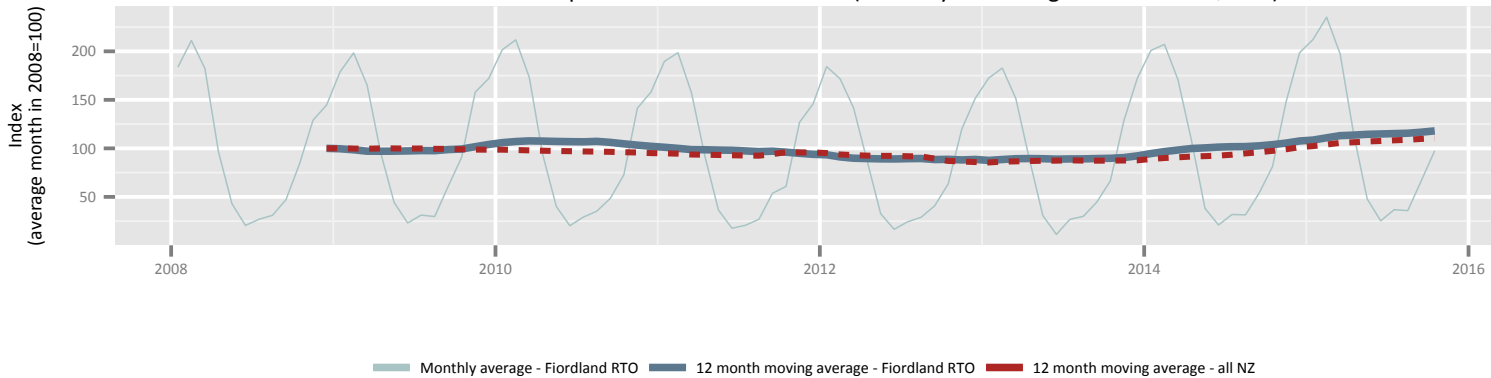
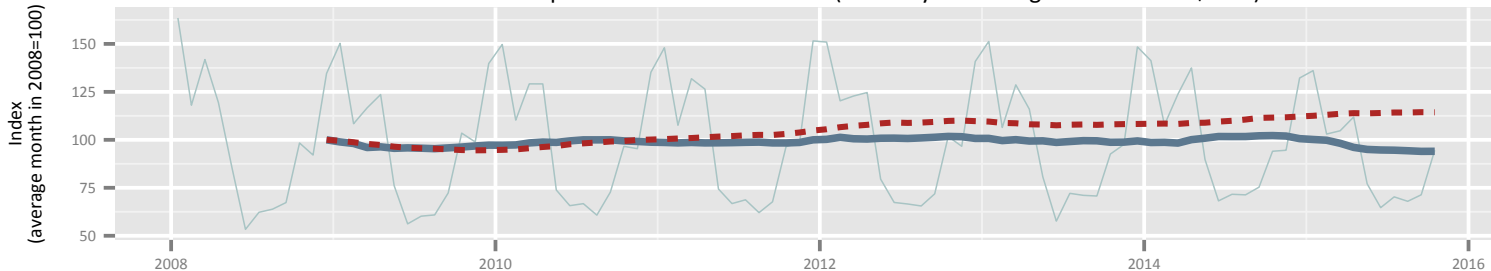


Regional Tourism summary Fiordland RTO

International tourist expenditure in Fiordland RTO (total in year ending March 2015 = \$90m)



Domestic tourist expenditure in Fiordland RTO (total in year ending March 2015 = \$50m)



International tourist spend in Fiordland RTO compared to all New Zealand international tourism



Domestic tourist spend in Fiordland RTO compared to all New Zealand domestic tourism

