



MINISTRY OF BUSINESS,
INNOVATION & EMPLOYMENT
HĪKINA WHAKATUTUKI

Te Ara Paerangi Future Pathways

Te Kāwanatanga o Aotearoa
New Zealand Government



Overview

- The multi-year Te Ara Paerangi – Future Pathways programme aims to build a modern, future-focused research, science and innovation system that equips New Zealand to meet complex challenges and make the most of the opportunities ahead.
- In December 2022, the Minister of Research, Science and Innovation launched the Te Ara Paerangi – Future Pathways White Paper.
- The White Paper builds on what we heard from the sector through consultation on the Green Paper which included over 900 submissions and workshops attended by over 1,000 people.
- It presents a high-level vision for New Zealand’s public Research Science and Innovation (RSI) system, including key policy directions and actions, and provides a roadmap to implement the reform programme.
- The White Paper is intended to be an enduring policy document that signals the **beginning** of the multi-year reform programme.

Overview



Te Kāwanatanga o Aotearoa
New Zealand Government

Te Ara Paerangi Future Pathways White Paper 2022



- Proliferation of multiple and competing governance structures, strategies and priorities
- Institutions with limited capacity to reorient to new industry and priorities
- System responsiveness to Māori is weak and models of engagement are poor
- Lack of viable career pathways for talented people

Current state

Key shifts

- Enable greater impact
- Establish National Research Priorities
- Embed Te Tiriti
- Grow and revise funding approaches
- Redesign institutions

Future state

- RSI system makes a meaningful impact on the wellbeing of New Zealanders
- The system delivers on Research Priorities of national significance
- The system gives full expression to Te Tiriti and is responsive to the needs and values of Māori
- The system attracts and retains a talented and diverse workforce
- Institutions are resilient and adaptable in a changing environment

Reform Vision and Objectives

An RSI system that supports wellbeing for all current and future New Zealanders; a high-wage low-emissions economy; and a thriving, protected environment through excellent and impactful research

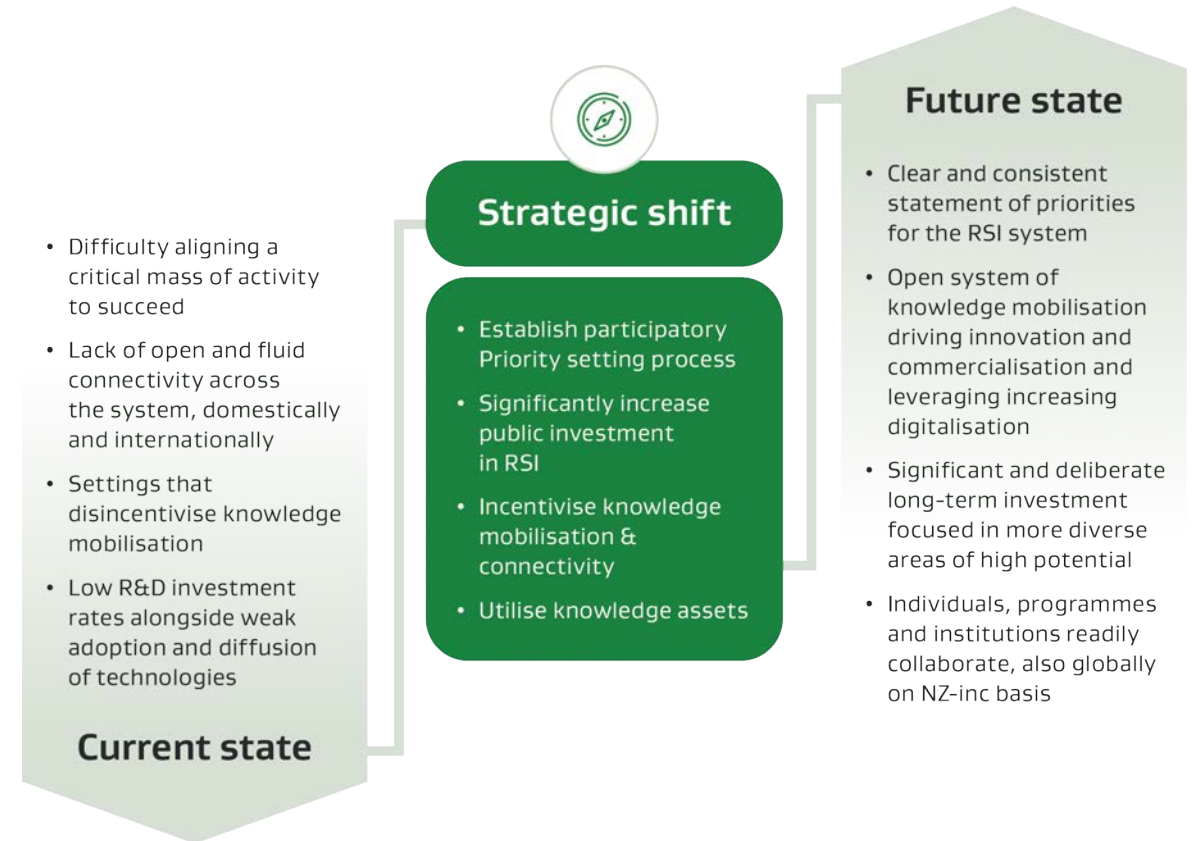


1. Creating New Futures

1.1 Establish National Research Priorities

1.2 Accelerate innovation, diversify and scale up impact

1.3 Grow global connectivity

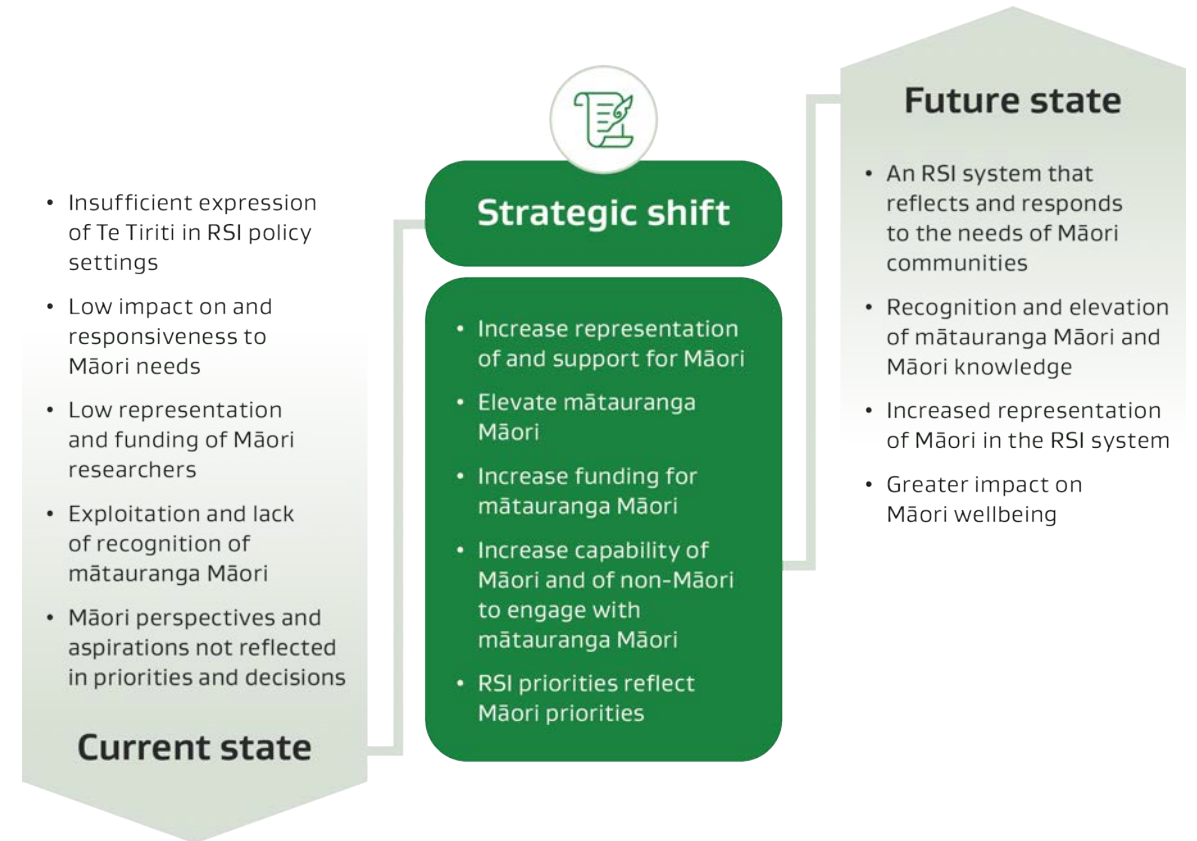


2. Embedding Te Tiriti

2.1 Advancing Māori aspirations in the RSI system

2.2 Investing in mātauranga Māori, Māori knowledge

2.3 Crown to lead by example

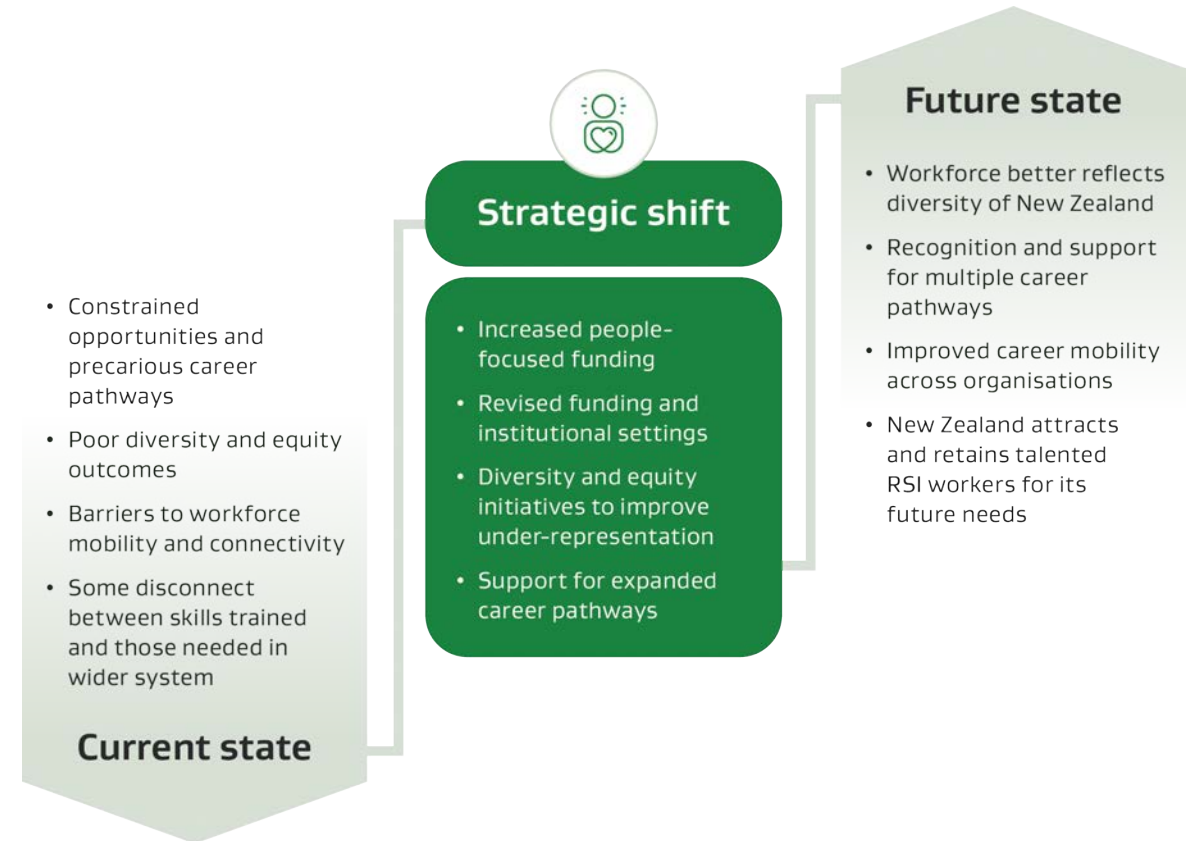


3. Valuing Our People

3.1 Attract, develop and retain talented people

3.2 Supporting diversity at all levels

3.3 Empowering Pacific Peoples



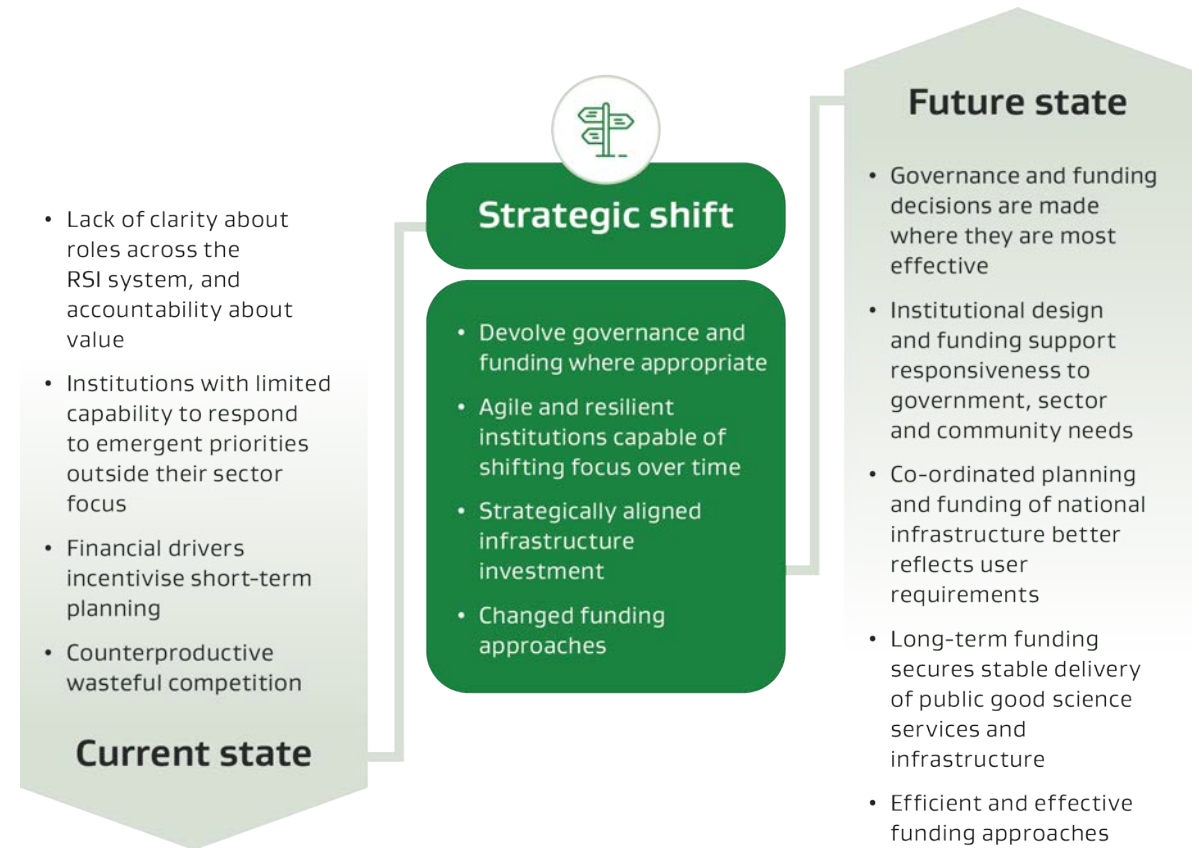
4. Building System Agility

4.1 Clarify roles and responsibilities

4.2 Co-ordinating investment in future-oriented infrastructure

4.3 Designing resilient and adaptable public research organisations

4.4 Funding mechanisms that support system goals



Implementation

Phase 1: Workforce and people support (2023)

- Introduce RSI Workforce Policy Package
- Release RSI Te Tiriti Statement

Phase 2: National Research Priorities (2023–2024)

- Establish new National Research Priorities
- Establish funding mechanisms to invest in Priorities

Phase 3: Institutional change (from 2024, where required)

- Undertake institutional reform where required to achieve the vision of Te Ara Paerangi – Future Pathways

Increase R&D expenditure to 2% of GDP (2023–2030)

What has been happening since the White Paper launch?

- We will begin with addressing immediate matters first, such as workforce support and embedding Te Tiriti, then setting the strategic direction of the RSI system through National Research Priorities.

Workforce

- We are currently developing policy actions in this space, these include:
 - expanding and refreshing research fellowships (including for Māori and Pacific researchers)
 - applied training schemes, specifically applied doctorates
- We expect to launch the expanded research fellowships later this year and the applied doctorates scheme in 2024.
- Ngā Puanga Pūtaiao Fellowships & Te Ara Pōtiki Internships have been launched and will address an immediate need to grow Māori and Pacific contribution in the STEM workforce and the innovation system, they are set to open in April and July 2023.

Embedding Te Tiriti

- The first policy action in this objective is to have the Crown lead by example as a partner to Te Tiriti o Waitangi, including through an RSI Te Tiriti o Waitangi statement. We have been undertaking targeted hui to help us develop a Tiriti statement that will set out how government intends to support and embed Te Tiriti in a future RSI system. The statement will do this by outlining our obligations, expectations and aspirations under Te Tiriti. We expect to release the statement by the middle of the year.

National Research Priorities

- We are in the final stages of designing a process for setting our NRPs. This focuses on how to determine our NRP not what they should be. We expect to go to start to determine our NRPs in mid-2023
-

How to stay involved

You can stay connected with Te Ara Paerangi-Future pathways via the MBIE website where you can join our email list to receive updates and subscribe to our newsletter to learn more and get involved.

You can contact us at:

www.mbie.govt.nz/te-ara-Paerangi-future-pathways

futurepathways@mbie.govt.nz

[@MBIEsci](https://twitter.com/MBIEsci) – MBIE Science on Twitter

