



MBIE's Regulatory Systems Stewardship Strategy 2023-2028

IMPROVING REGULATORY OUTCOMES FOR AOTEAROA NEW ZEALAND

MARCH 2023

CONTEXT

MBIE's 2023-2028 Regulatory Systems Stewardship Strategy is our organisational commitment to improving how we steward our regulatory systems.

Our goal is to extend and deepen our regulatory stewardship capability so that we can better support the safety, growth, and sustainability of Aotearoa New Zealand's communities, people, and businesses. The majority of our people at MBIE are involved in either shaping policy for regulation, designing it, delivering services as part of a regulatory system, ensuring people comply, or assessing its impact. When we do this well, all New Zealanders benefit.

This strategy builds on work that's already underway, and extends our ambition, based on the lessons we've learnt since our 2017 strategy. Our focus for the next five years will be to:

- > lift the level of capability and practice across MBIE
- > leverage our significant regulatory role to support improvements across the public sector
- > utilise a leadership-led model to work with our partner organisations across our different regulatory systems to embed a regulatory stewardship approach to proactively maintain systems over time.

At the heart of our ambition is the need for stewardship to be in our DNA – something that we don't have to think about but do naturally, day-to-day.

We also have an opportunity to leverage MBIE's scale, scope and connection.

When our whole organisation understands, values and prioritises regulatory stewardship, we will be able to:

- > build the knowledge we need to manage our systems and inform our decisions
- > steward our systems proactively
- > be deliberate in our design and delivery.

The strategy's six strategic responses complement and support each other to achieve this ambition. They represent the areas where MBIE can make the most significant difference to enhance regulatory stewardship.

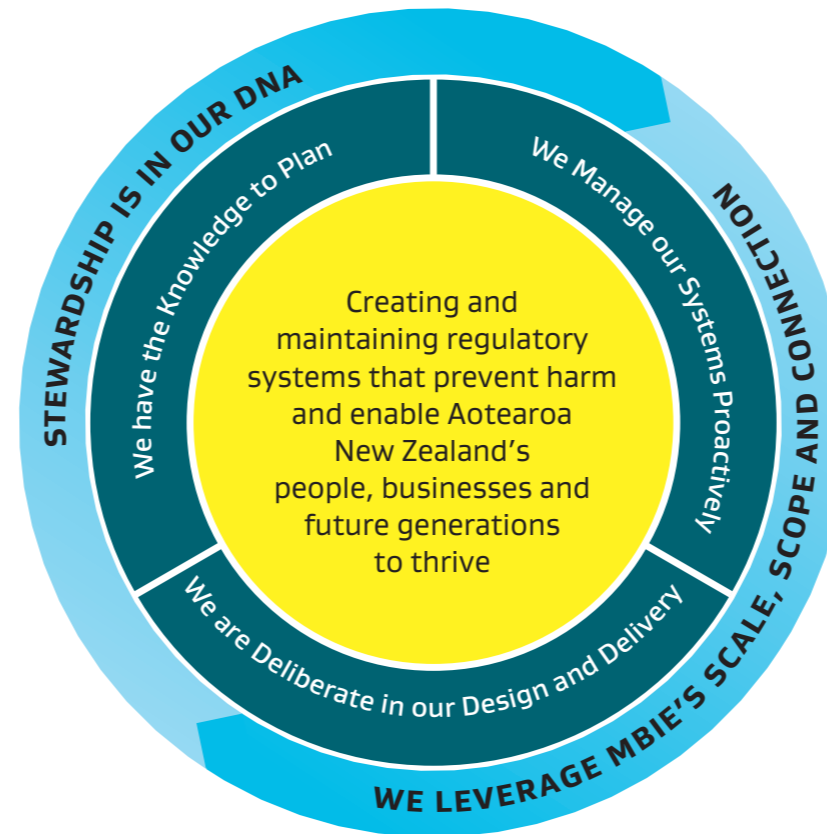
Our success will require a shared commitment across our organisation and beyond.

OUR STRATEGIC RESPONSE

Focusing MBIE's effort where it matters most

OUR AMBITION

Setting a clear goal to aim for



2023 GOAL

Our Immediate Focus

By December 2023, all MBIE's regulatory systems to have established regulatory system governance and system risk reporting.



EMBED FORMAL SYSTEM LEADERSHIP

System leaders are accountable for the performance and risks of their regulatory systems



LIFT CORE PEOPLE CAPABILITY

Our people are effective regulatory system stewards



ENHANCE THE DESIGN OF REGULATORY POLICY AND IMPLEMENTATION

An end-to-end design approach results in consistently robust regulatory system design



EMBED PROACTIVE SYSTEM MANAGEMENT

Regulatory systems more easily adapt and respond to performance feedback and shifts in context



BUILD KNOWLEDGE TO EMPOWER REGULATORY STEWARDSHIP

We use the right kinds of knowledge to make decisions that will improve regulatory system performance and better respond to drivers of change



ENGAGE WITH CROSS-SYSTEM ISSUES AND OPPORTUNITIES

MBIE acts in concert, internally and with other organisations, to be agile and responsive