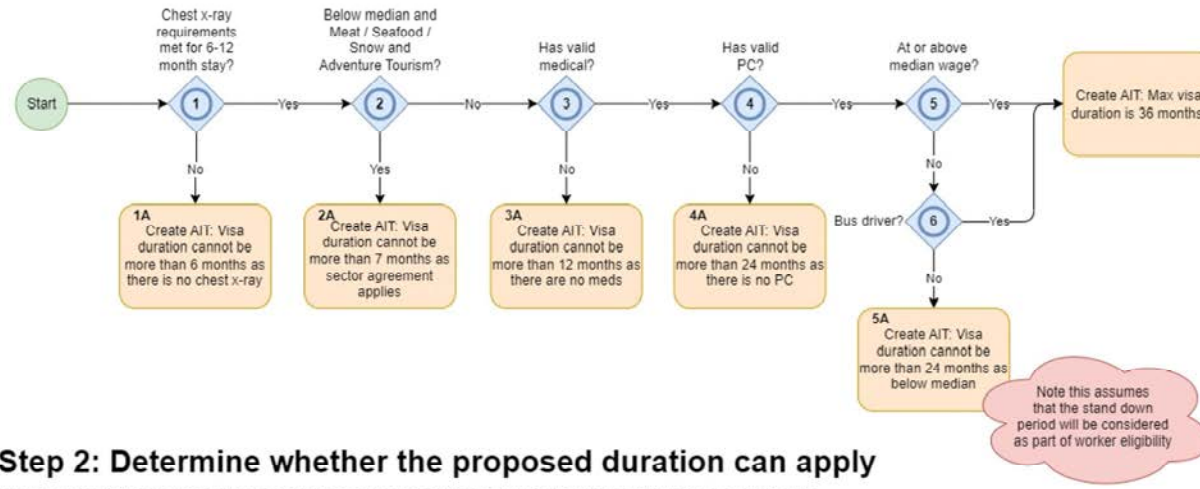


Step 1: Define visa duration

For all applications this creates a proposed visa with the maximum duration the applicant can get.

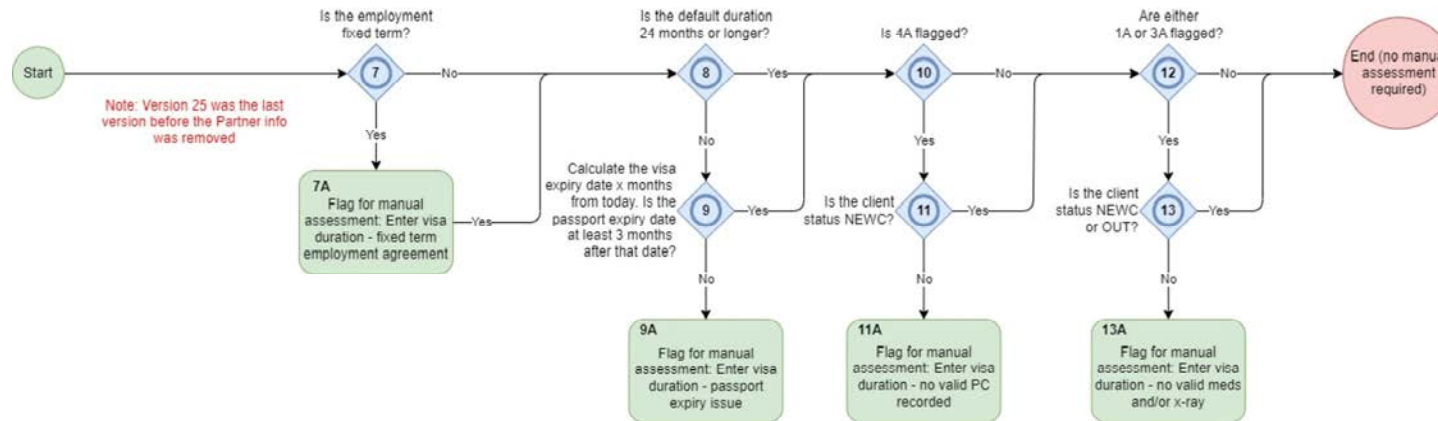


Step 2: Determine whether the proposed duration can apply

This determines whether we want to trigger a manual assessment for the IO to determine whether the maximum duration should apply.

If there's no manual trigger and the IO has not proactively made changes, the maximum duration will apply.

If there is a manual trigger, the IO will see the proposed visa so they will know what the maximum duration they can consider is, and then decide whether it needs to be shortened because of whatever has flagged.



Note: Version 25 was the last version before the Partner info was removed

	Offshore	Onshore
36 months	5 months FEB 36 months travel/stay from first arrival	36 months travel/stay from date of issue
12 months	5 months FEB 12 months travel/stay from first arrival	Manual
7 months	5 months FEB 7 months travel/stay from first arrival	7 months travel/stay from date of issue
6 months	5 months FEB 6 months travel/stay from first arrival	Manual
24 months	5 months FEB 24 months travel/stay from first arrival	24 months travel/stay date of issue (if below median, but manually assess if no PC is the reason)