



Aukaha

KIA KAHA, AUKAHA

AUKAHA BETTER HOMES



Otago
Home
Upgrade

TPK
Critical
Home
Repairs

Healthy
Homes,
Healthy
Whānau

Healthy
Homes
Initiative

Climate
Safe
Housing

He kura te tangata

*The human being is
precious*

***He aha te mea nui o te
ao?***

*What is the most
important thing in the
world?*

***He tangata, he tangata,
he tangata***

*It is the people, it is the
people, it is the people*





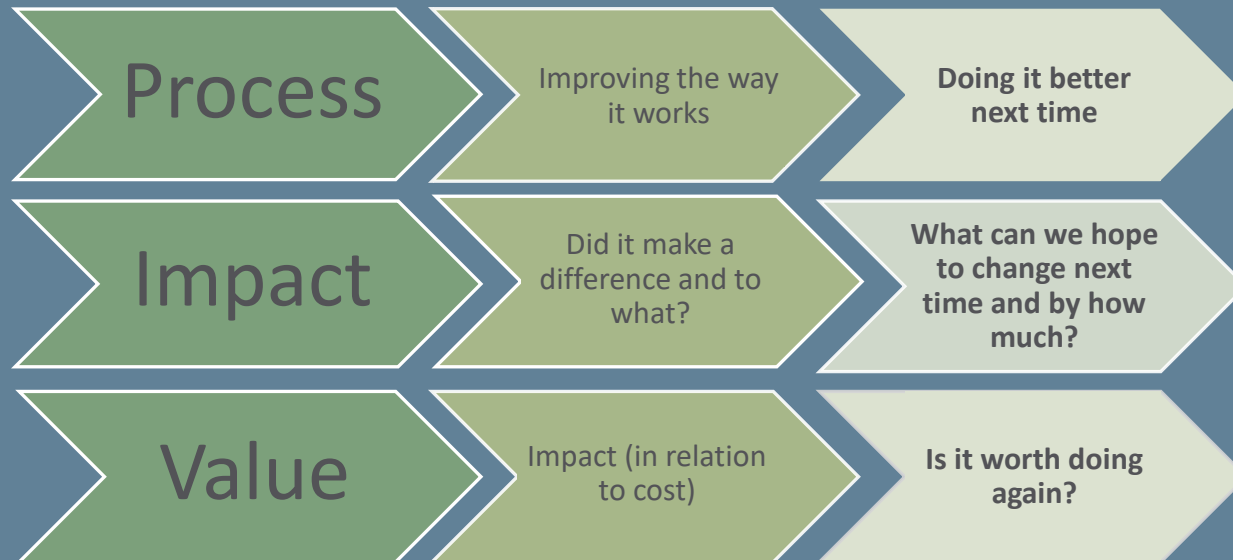
Aukaha

KIA KAHA, AUKAHA

OTAGO HOME UPGRADE PROGRAMME

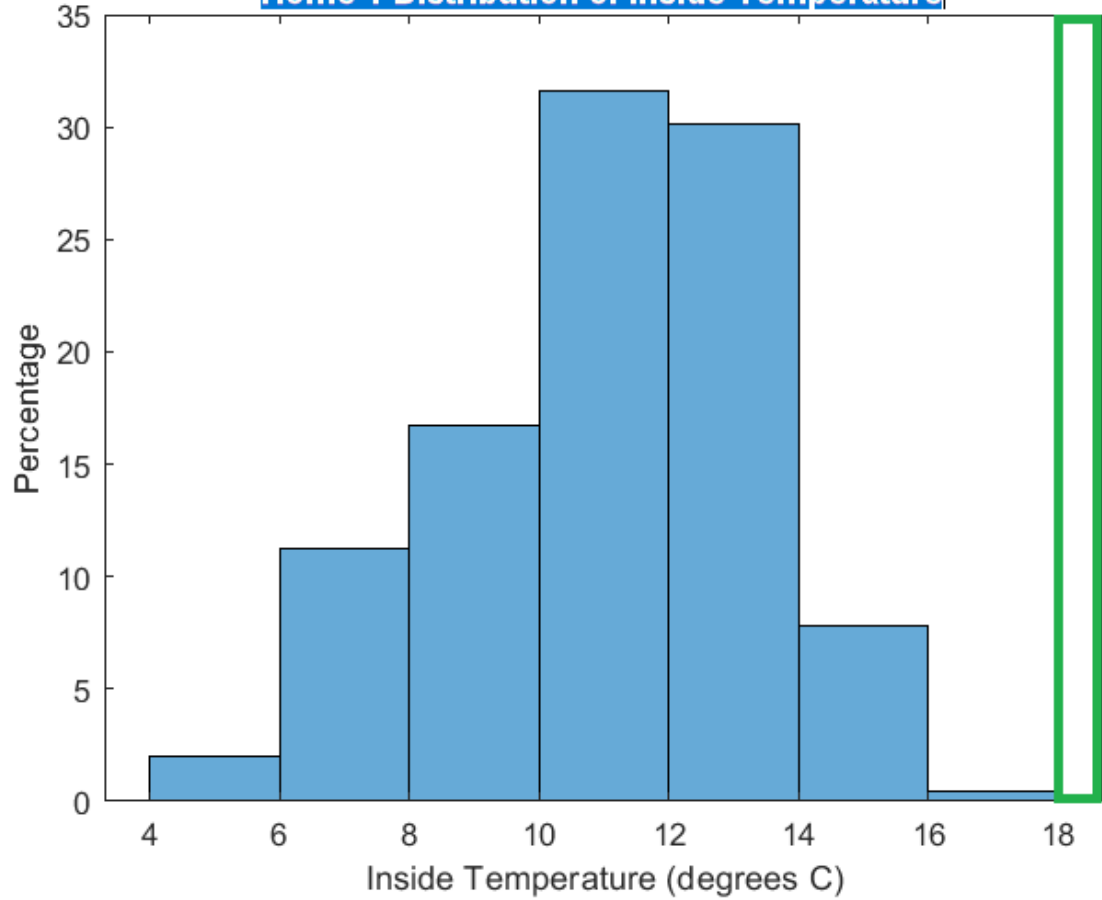
OTAGO HOME UPGRADE

- 250 – 288 Whanau
- Interventions relating to insulation, ventilation, moisture control and heating
- Pilot to be completed by December 2023
- Otago resident/owner occupier/community services card or evidence of low income

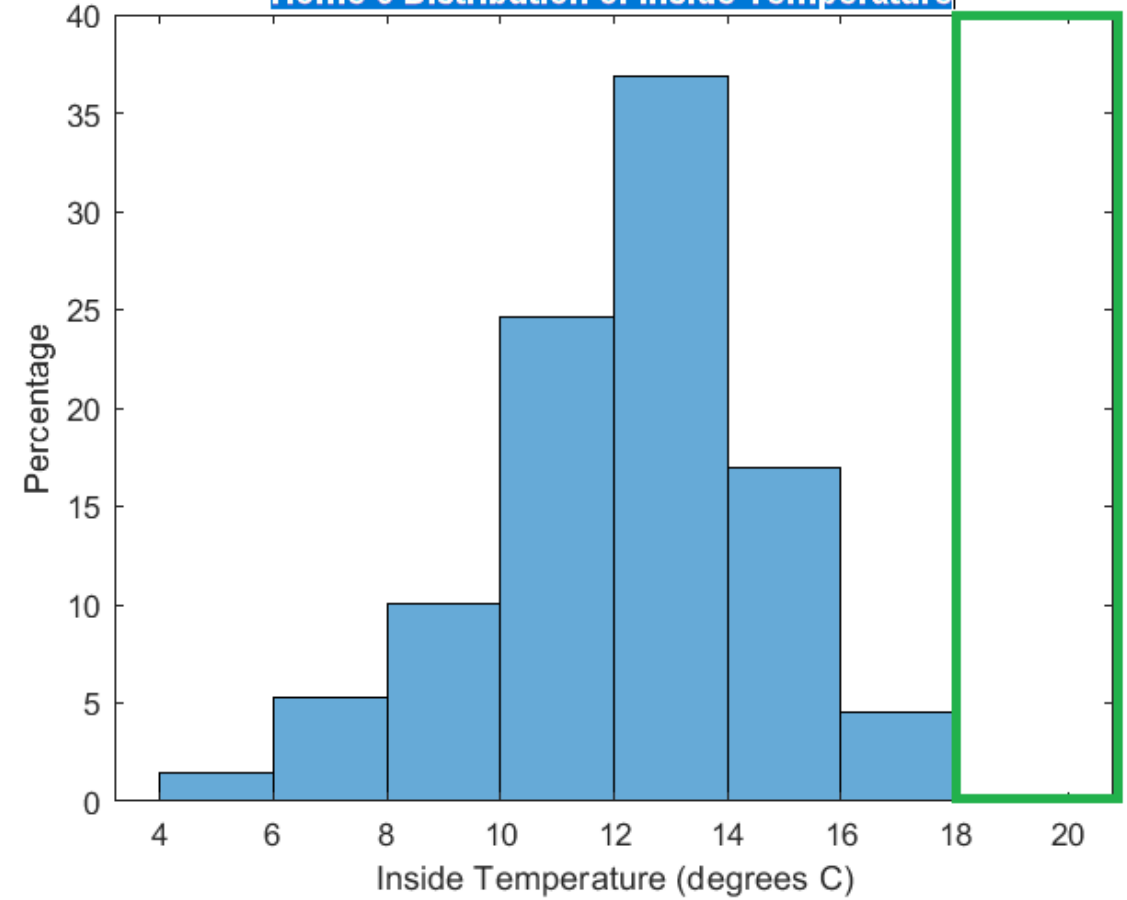


DISTRIBUTION OF INSIDE TEMPERATURE

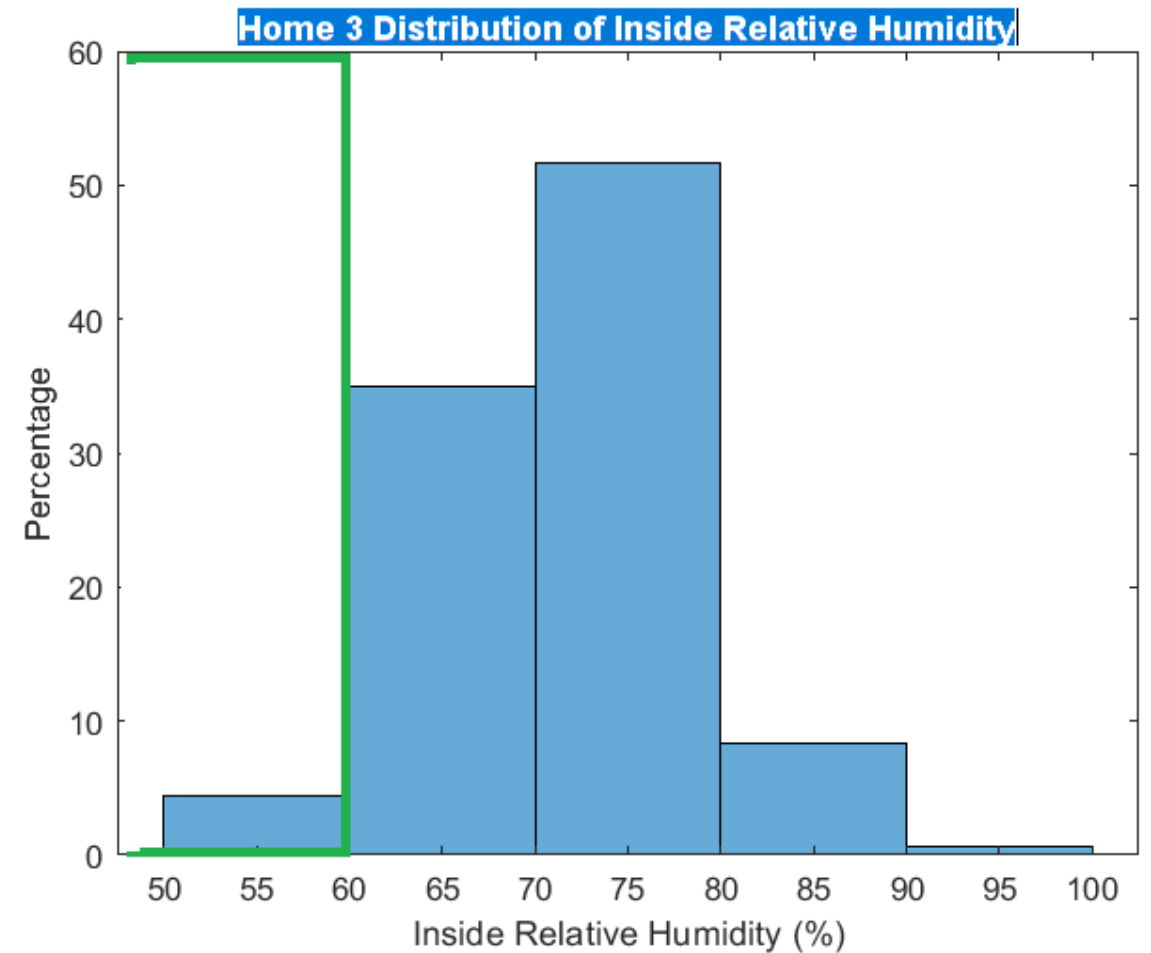
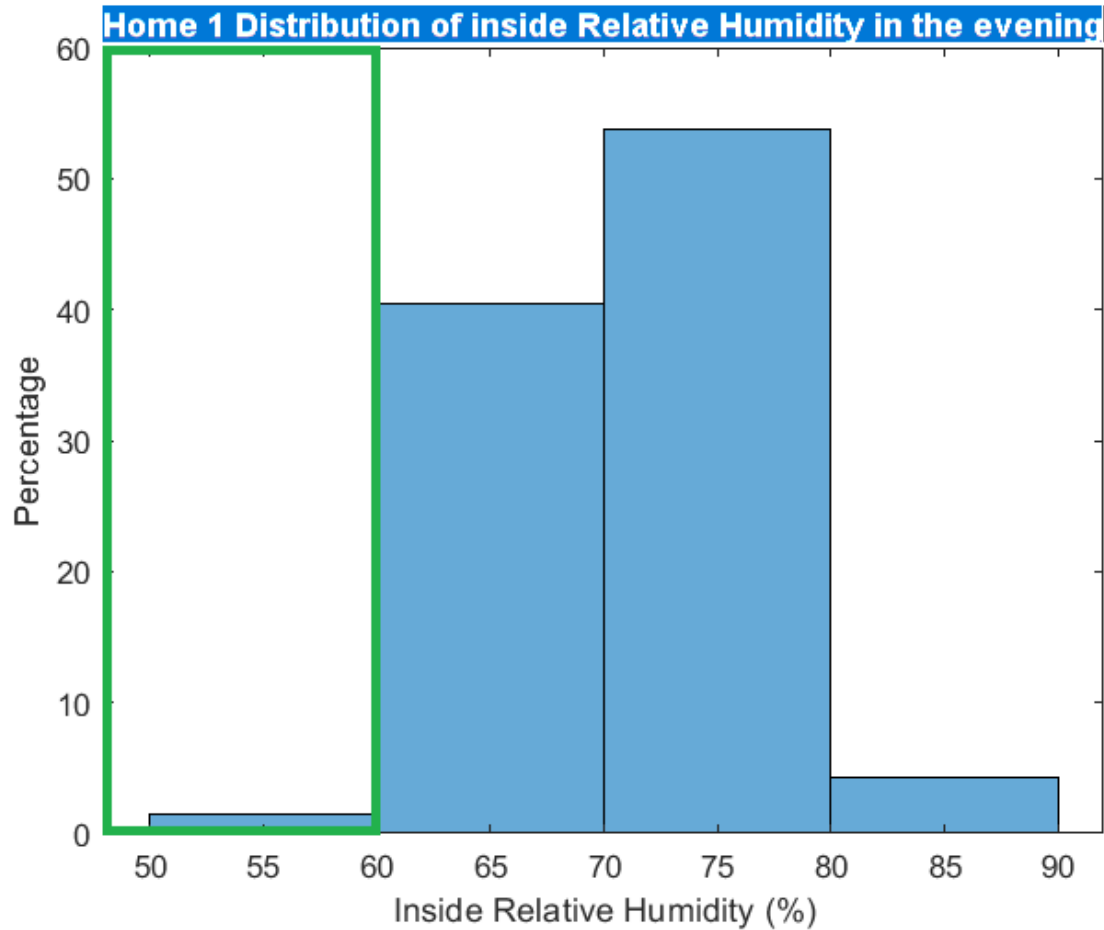
Home 1 Distribution of inside Temperature



Home 3 Distribution of inside Temperature



RELATIVE HUMIDITY MEASURE





Aukaha

KIA KAHA, AUKAHA

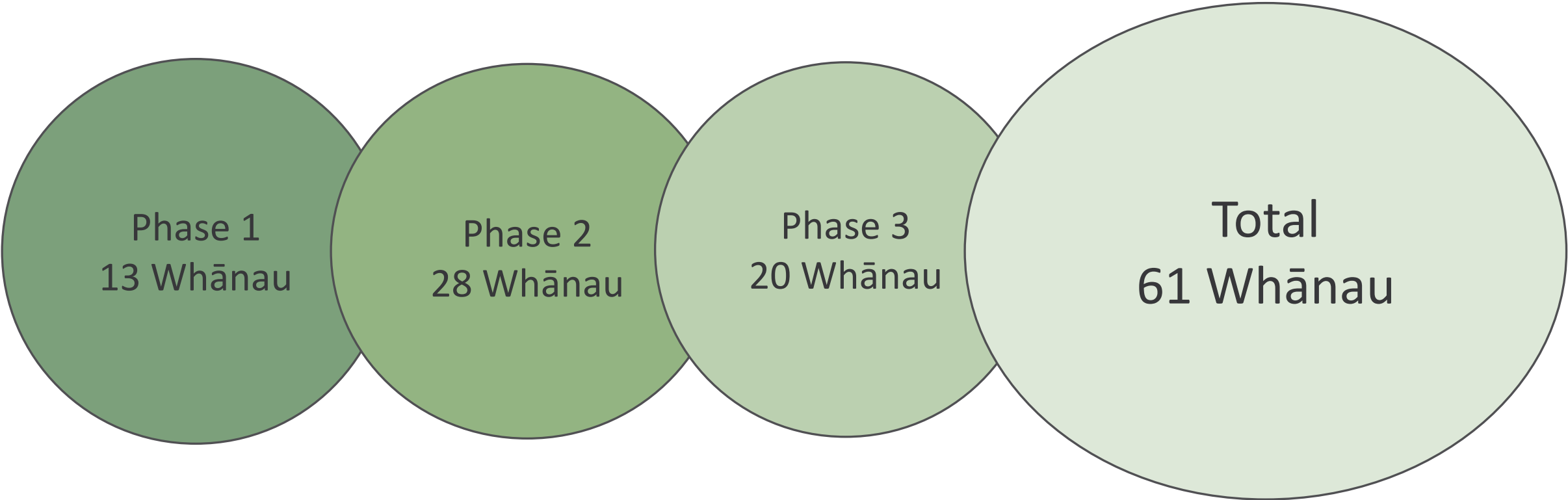
**TPK CRITICAL AND ESSENTIAL
REPAIRS**



TPK CRITICAL AND ESSENTIAL REPAIRS

- We work in partnership with Te Puni Kōkiri to improve the quality of housing for Māori communities
- We connect whānau who have housing repair needs, such as insulation and heating, with local builders and suppliers.
- Our home assessments look at how warm, safe and dry homes are. If any repairs are required, Aukaha applies for funding from Te Puni Kōkiri.
- Whānau must meet criteria defined by Te Puni Kōkiri, such as having a community services card and being the owner/occupier of the home, or living in a whānau-owned house.

TPK CRITICAL AND ESSENTIAL REPAIRS





Aukaha

KIA KAHA, AUKAHA

HEALTHY HOMES INITIATIVE

HEALTHY HOMES INITIATIVE

- 195 whānau per year – Otago/Southland
- 66 whānau – South Canterbury
- Partners – Awarua Synergy and Arowhenua whānau
- Completed by 30 July 2023
- Criteria
 - 0-5y/o hospitalisations
 - 0-5y/o priority populations
 - Rheumatic fever
 - Pregnant people and newborns



HEALTHY HOMES INITIATIVE

We work with whānau, helping them to navigate the complexities of seeking help. We bridge the gap between whānau and the wide range of housing services, enabling and supporting them to access relevant resources.

Working together with whānau we create a safer and warmer living environment for whānau and their tamariki. This includes help with accessing insulation, curtains, beds, bedding, minor repairs, floor coverings, ventilation, heating sources, full and correct entitlement assessments through Work and Income, support with power bills, and finding alternative accommodation as needed.





We're discovering distressing conditions and hardship.







AUKAHA BETTER HOMES JOURNEY

