

QUARTERLY CONNECTIVITY UPDATE

Q2: to 30 JUNE 2019



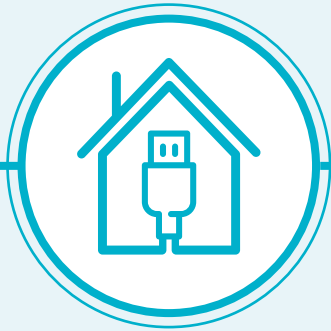
CONTENTS

OUR TARGETS	3
OUR PROGRESS	4
UFB SNAPSHOTS	5
SNAPSHOT FEATURE.....	6
UPDATE BY REGION	
NORTHLAND.....	8
AUCKLAND	9
WAIKATO	10
BAY OF PLENTY	11
GISBORNE	12
HAWKE'S BAY	13
TARANAKI	14
MANAWATŪ-WHANGANUI	15
WELLINGTON.....	16
TASMAN	17
NELSON	18
MARLBOROUGH.....	19
WEST COAST	20
CANTERBURY.....	21
OTAGO	22
SOUTHLAND.....	23



OUR TARGETS

ULTRA-FAST BROADBAND (UFB) TARGETS



OVER 1.8 MILLION HOMES & BUSINESSES

(87% of New Zealanders) will have access to UFB by the end of 2022



UFB will be rolled out to over 400 TOWNS & CITIES



When the programme is complete, New Zealand should be in the **TOP FIVE COUNTRIES** in the OECD for fibre availability



OUR OVERALL TARGET

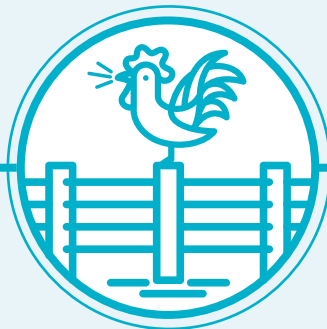
99.8%

of New Zealand's population will be able to access improved broadband by the end of 2023

RURAL BROADBAND INITIATIVE PHASE 2 (RBIZ) AND MOBILE BLACK SPOT FUND (MBSF) TARGETS



812 ELIGIBLE MARAE



84,000 RURAL HOMES AND BUSINESSES

will receive improved broadband by the end of 2023



ABOUT 1,400 KM
of State Highway and over
168 TOURISM SITES
will receive mobile coverage

OUR PROGRESS

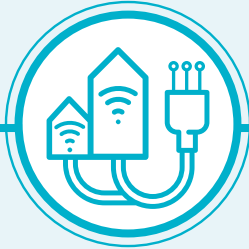
ULTRA-FAST BROADBAND (UFB) PROGRESS



110 UFB TOWNS AND CITIES are now complete



The UFB build is **85% COMPLETE AND 2% AHEAD** of schedule



820,761 HOMES AND BUSINESSES connected to UFB



UPTAKE 52%



This is a **7% INCREASE** in connections versus March 2019

OUR OVERALL PROGRESS FOR UFB



78%

of New Zealanders can now access UFB



INVESTED IN FY19

UFB: \$225m

RBI2/MBSF: \$26.5m

RURAL BROADBAND INITIATIVE PHASE 2 (RBI2) AND MOBILE BLACK SPOT FUND (MBSF) PROGRESS



38,662 RURAL HOMES AND BUSINESSES can access improved broadband
46% complete



26 TOURISM SITES have mobile coverage
16% complete



238KM OF STATE HIGHWAY have mobile coverage
17% complete



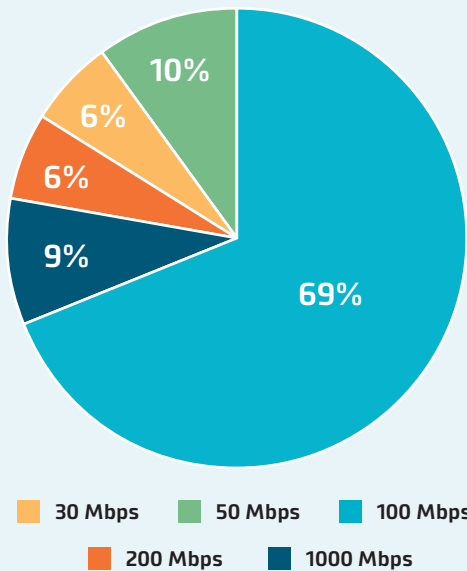
25 MOBILE TOWERS are complete
5% complete

UFB SNAPSHOTS

TOP 10 CENTRES FOR UFB UPTAKE THIS QUARTER

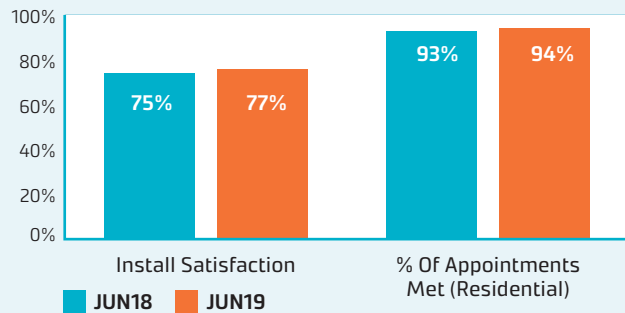
RANK	TOWN	UPTAKE %	CHANGE IN RANK
1	Waiuku	64%	-
2	Hamilton	64%	-
3	Whatawhata	63%	+19
4	Tauranga	63%	+9
5	Nelson	62%	-2
6	Longburn	62%	+4
7	Horotiu	61%	+2
8	Dunedin	60%	-3
9	Cambridge	59%	-1
10	New Plymouth & Auckland	58%	+1/-4

UFB PRODUCT MIX AND INSTALLATION MEASURES

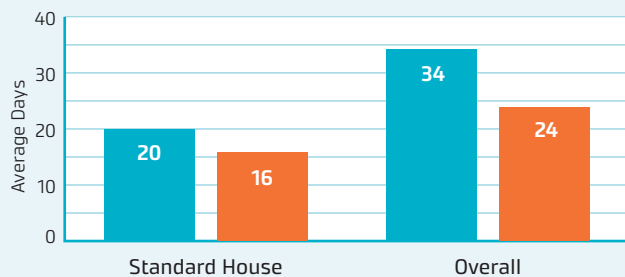


The average speed of UFB services is **179 Mbps**. Consumers are continuing to migrate to higher speed UFB plans, including the gigabit plan.

UFB INSTALL CUSTOMER MEASURES



UFB AVERAGE DAYS TO INSTALL



GIGABIT CONNECTIONS

74,613

Gigabit connections - end of June

10,174

Additional connections this quarter



SNAPSHOT FEATURE

RURAL BROADBAND HELPS CHILDREN'S AUTHOR

THERE CAN BE FEW NICER PLACES TO WAKE UP EACH MORNING THAN HIGH ON A RIDGE OVERLOOKING THE EASTERN BAY OF PLENTY'S UNSPOILT OHIWA INLET.

Children's writer and illustrator Nikki Slade Robinson – famous for “The little Kiwi's Matariki” – lives in that idyllic spot with husband Jim who helps front the nearby Motu Trails – one of Great Rides on The New Zealand Cycle Trail.

The availability of city-grade internet through local Wireless Internet Service Provider (WISP) Evolution Networks has given the Robinsons the best of both worlds – a city grade online working environment and a country lifestyle. And Evolution's partnership with CIP in phase two of the Rural Broadband Initiative (RBI2) project is extending similar coverage to more rural people in the Opotiki, East Cape and Bay of Plenty regions every week.

Evolution is a young WISP dating back to 2015 when the government was promoting digital development plans among district councils. Tauranga-based IT service company Stratus Blue came up with the idea, and the Opotiki District Council swung behind as a financial partner. CIP recognised the work of Evolution in expanding its network to unserved areas and supported it to expand and upgrade its services.

Nikki is a huge supporter of Evolution. “We were one of their first customers in 2015 – I met them at a public meeting in Ohiwa. Since we signed up 4 years ago we've only had one brief outage during a big storm. It's great that I can now send my writing and illustrations over the internet just as though I was in the middle of Auckland.”

Husband Jim is equally enthusiastic. “The change to Evolution was overwhelming. Before they came, we relied on copper lines, with constant dropouts. These days I'm constantly sending big batches of photos showcasing the Trails with no issue. There's no way I could have done that before – you could never send emails over more than a megabyte or so at a time.”

Jim's even joined video conferences from home involving lecturers and students from multiple locations and says apart from minor variation at peak times, Evolution's service has never missed a beat.



Evolution's Mark Simpson has come to know the Robinsons well. Mark was working for Stratus Blue when it saw the opportunity to get into the WISP market. Having spearheaded the growth, he has come to know most of the customers along the way but with rapid growth through about the 300 mark he confesses this is becoming more of a challenge.

The territory is challenging for a WISP. Mark covers a huge distance every week rolling out new towers, upgrading existing ones and connecting new customers from his base in Tauranga, north to Te Kaha and Waihou Bay, and south to Kawerau. One of the upgrades at Kohi Point, funded by CIP, will improve the Robinsons' service even further. Another new site funded by CIP, at Nukuhou, is adding coverage for a number of farms, enabling not only online farm management but better education for rural students and serious improvement in farm security on these large, isolated properties.

“We've got at least half the homes in Ohiwa as customers now, including one who is a software developer running a server there,” Mark says.

Evolution Networks has contracted with CIP to cover approximately 300 households and businesses in Opotiki and Whakatane districts. We look forward to working with Mark and the rest of his team to make a difference to rural connectivity.

UPDATE BY REGION





NORTHLAND



UFB

- There are **10** towns and cities with UFB available.
- **48%** of those with access to UFB have connected.
- There is a total of **16,354** premises connected.

RANK	TOWN	UPTAKE
1	Whangārei	58%
2	Hikurangi	56%
3	Waipū	55%
4	Dargaville	42%
5	One Tree Point	40%



RBI2/MBSF

- There are **5,016** households or businesses with RBI2 access which is **52%** of target.
- There are **29** kilometres of mobile coverage on State Highways which is **26%** of target.
- There are **3** tourist sites with mobile coverage which is **20%** of target.
- There have been **7** mobile towers built which is **11%** of target.



MARAE

There are **2** Marae connected in Northland:

- Oromāhoe
- Te Houhanga





AUCKLAND



UFB

- There are **5** towns and cities with UFB available.
- **58%** of those with access to UFB have connected.
- There is a total of **313,948** premises connected.

RANK	TOWN	UPTAKE
1	Waiuku	64%
2	Auckland	58%
3	Pukekohe	54%
4	Waiheke Island	48%
5	Helensville	31%



RBI2/MBSF

- There are **3,393** households or businesses with RBI2 access which is **55%** of target.
- There are **10** kilometres of mobile coverage on State Highways which is **65%** of target.
- There have been **2** mobile towers built which is **8%** of target.





WAIKATO



UFB

- There are **21** towns and cities with UFB available.
- **53%** of those with access to UFB have connected.
- There is a total of **64,240** premises connected.

RANK	TOWN	UPTAKE
1	Hamilton	64%
2	Whatawhata	63%
3	Horotiu	61%
4	Cambridge	59%
5	Te Awamutu	51%



RBI2/MBSF

- There are **4,229** households or businesses with RBI2 access which is **41%** of target.
- There are **12** kilometres of mobile coverage on State Highways which is **12%** of target.
- There are **2** tourist sites with mobile coverage which is **15%** of target.





BAY OF PLENTY



UFB

- There are **6** towns and cities with UFB available.
- **57%** of those with access to UFB have connected.
- There is a total of **58,430** premises connected.

RANK	TOWN	UPTAKE
1	Tauranga	63%
2	Rotorua	54%
3	Ōmokoroa	51%
4	Whakatāne	49%
5	Katikati	17%



RBI2/MBSF

- There are **2,278** households or businesses with RBI2 access which is **37%** of target.
- There are **10** kilometres of mobile coverage on State Highways which is **15%** of target.
- There are **3** tourist sites with mobile coverage which is **33%** of target.



MARAE

There is **1** Marae connected in the Bay of Plenty:

- Wairūrū





GISBORNE



UFB

- There are **3** towns and cities with UFB available.
- **42%** of those with access to UFB have connected.
- There is a total of **6,470** premises connected.

RANK	TOWN	UPTAKE
1	Gisborne	43%
2	Ruatoria	29%
3	Tolaga Bay	25%



RB12/MBSF

- There are **1,028** households or businesses with RB12 access which is **43%** of target.
- There are **23** kilometres of mobile coverage on State Highways which is **21%** of target.



MARAE

There are **3** Marae connected in Gisborne:

- Hinemaurea ki Wharekāhika
- Hinerupe
- To Poho o Rāwiri





HAWKE'S BAY



UFB

- There are **5** towns and cities with UFB available.
- **43%** of those with access to UFB have connected.
- There is a total of **22,820** premises connected.

RANK	TOWN	UPTAKE
1	Napier/Hastings	45%
2	Wairoa	22%
3	Bay View	20%
4	Takapau	17%
5	Ongaonga	9%



RB12/MBSF

- There are **1,219** households or businesses with RB12 access which is **28%** of target.
- There are **6** kilometres of mobile coverage on State Highways which is **6%** of target.
- There is **1** tourist site with mobile coverage which is **11%** of target.
- There has been **1** mobile tower built which is **2%** of target.



MARAE

There are **4** Marae connected in Hawke's Bay:

- Erepēti
- Māhanga (Rongomaiwahine)
- Hinemihi
- Raupunga





TARANAKI



UFB

- There are **10** towns and cities with UFB available.
- **52%** of those with access to UFB have connected.
- There is a total of **20,244** premises connected.

RANK	TOWN	UPTAKE
1	New Plymouth	58%
2	Hāwera	54%
3	Stratford	47%
4	Ōpunake	24%
5	Inglewood	15%



RB12/MBSF

- There are **1,118** households or businesses with RB12 access which is **46%** of target.
- There are **11** kilometres of mobile coverage on State Highways which is **14%** of target.
- There has been **1** mobile tower built which is **6%** of target.





MANAWATŪ-WHANGANUI



UFB

- There are **8** towns and cities with UFB available.
- **49%** of those with access to UFB have connected.
- There is a total of **35,891** premises connected.

RANK	TOWN	UPTAKE
1	Longburn	62%
2	Palmerston North	53%
3	Feilding	52%
4	Levin	49%
5	Whanganui	45%



RBI2/MBSF

- There are **6,173** households or businesses with RBI2 access which is **55%** of target.
- There are **29** kilometres of mobile coverage on State Highways which is **34%** of target.
- There are **2** tourist sites with mobile coverage which is **33%** of target.
- There has been **1** mobile tower built which is **3%** of target.





WELLINGTON



UFB

- There are **4** towns and cities with UFB available.
- **41%** of those with access to UFB have connected.
- There is a total of **82,598** premises connected.

RANK	TOWN	UPTAKE
1	Masterton	51%
2	Wellington	41%
3	Ōtaki	37%
4	Kapiti	32%



RBI2/MBSF

- There are **1,677** households or businesses with RBI2 access which is **43%** of target.
- There is **1** tourist site with mobile coverage which is **20%** of target.





TASMAN



UFB

- There are **2** towns and cities with UFB available.
- **28%** of those with access to UFB have connected.
- There is a total of **1,243** premises connected.

RANK	TOWN	UPTAKE
1	Ruby Bay	53%
2	Motueka	22%



RB12/MBSF

- There are **590** households or businesses with RB12 access which is **24%** of target.
- There is **1** kilometre of mobile coverage on State Highways which is **2%** of target.



NELSON



UFB

- There is **1** city with UFB available.
- **62%** of those with access to UFB have connected.
- There is a total of **16,856** premises connected.

RANK	TOWN	UPTAKE
1	Nelson	62%



RB12/MBSF

- There are **27** households or businesses with RB12 access which is **12%** of target.
- There is **1** kilometre of mobile coverage on State Highways which is **5%** of target.



MARLBOROUGH



UFB

- There are **2** towns and cities with UFB available.
- **49%** of those with access to UFB have connected.
- There is a total of **8,173** premises connected.

RANK	TOWN	UPTAKE
1	Blenheim	54%
2	Picton	26%



RBI2/MBSF

- There are **801** households or businesses with RBI2 access which is **33%** of target.
- There are **7** kilometres of mobile coverage on State Highways which is **14%** of target.



WEST COAST



UFB

- There are **4** towns and cities with UFB available.
- **47%** of those with access to UFB have connected.
- There is a total of **3,332** premises connected.

RANK	TOWN	UPTAKE
1	Hokitika	52%
2	Greymouth	51%
3	Runanga	35%
4	Reefton	14%



RBI2/MBSF

- There are **853** households or businesses with RBI2 access which is **30%** of target.
- There are **40** kilometres of mobile coverage on State Highways which is **15%** of target.
- There are **9** tourist sites with mobile coverage which is **29%** of target.
- There have been **10** mobile towers built which is **20%** of target.





CANTERBURY



UFB

- There are **18** towns and cities with UFB available.
- **51%** of those with access to UFB have connected.
- There is a total of **114,623** premises connected.

RANK	TOWN	UPTAKE
1	Timaru	56%
2	Ashburton	54%
3	Christchurch (incl Rangiora)	51%
4	Pareora	8%
5	Waiiau	1%



RB12/MBSF

- There are **4,887** households or businesses with RB12 access which is **50%** of target.
- There are **12** kilometres of mobile coverage on State Highways which is **8%** of target.
- There is **1** tourist site with mobile coverage which is **4%** of target.





OTAGO



UFB

- There are **7** towns and cities with UFB available.
- **53%** of those with access to UFB have connected.
- There is a total of **42,001** premises connected.

RANK	TOWN	UPTAKE
1	Dunedin	60%
2	Queenstown	48%
3	Ōamaru	47%
4	Cromwell	37%
5	Lake Hāwera and Lake Wānaka	17%



RB12/MBSF

- There are **2,454** households or businesses with RB12 access which is **49%** of target.
- There are **42** kilometres of mobile coverage on State Highways which is **29%** of target.
- There are **2** tourist sites with mobile coverage which is **17%** of target.





UFB

- There are **4** towns and cities with UFB available.
- **51%** of those with access to UFB have connected.
- There is a total of **13,538** premises connected.

RANK	TOWN	UPTAKE
1	Invercargill	52%
2	Otatara	36%
3	Mossburn	7%
4	Manapouri	6%



RBI2/MBSF

- There are **2,919** households or businesses with RBI2 access which is **50%** of target.
- There are **3** kilometres of mobile coverage on State Highways which is **8%** of target.
- There are **2** tourist sites with mobile coverage which is **13%** of target.
- There have been **3** mobile towers built which is **8%** of target.

